



## XDrum DD-250 Mesh E-Drum Kit

Art. No.: 00088326



## Operating instructions

Revision: 07/2022

These operating instructions are protected by copyright. Reproduction of these operating instructions, even in part, is only permitted with the permission of Musikhaus Kirstein GmbH. The same applies to the reproduction or copying of pictures, even in modified form.

## Content

Intended use .....	1
Included Components.....	3
Construction.....	4
Module specifications .....	7
Module Operating elements.....	8
Module connections.....	9
Get ready to play - the most important functions .....	10
Drum Kit Settings .....	11
Metronome settings .....	11
Playing to a song.....	13
Power saving mode.....	14
Resetting to factory settings - Factory Reset.....	14
Index - List of drum kits, songs and sounds .....	15
Midi notes of the pads.....	16
WEEE Declaration (Waste of Electrical and Electronic Equipment) .....	16

Thank you for choosing this product.

To ensure that you are completely satisfied with this product, please read carefully and understand this instruction manual before using our product. Keep these operating instructions in a safe place. The operating instructions must be passed on to all subsequent users.



Follow the operating instructions!



The signal word WARNING indicates hazards that can lead to serious injuries if no precautionary measures are taken.



The signal word NOTE indicates general precautions to be observed when handling the product.



Images and screen representations in these operating instructions may differ slightly from the appearance of the actual product, as long as this does not have a negative impact on the technical characteristics and safety of the product.



All person-related formulations in these operating instructions are to be regarded as gender-neutral.

These operating instructions apply to persons who have been supervised or instructed in the operation of the appliance by a person responsible for their safety and who have demonstrated their ability to handle the appliance.

All information in these operating instructions has been checked to the best of our knowledge and belief. However, neither the author nor the publisher can be held liable for any damage in connection with the use of these operating instructions.

Other product, brand and company names mentioned in this document may be the trademarks of their respective owners. Compliance with all applicable copyright laws is the responsibility of the user of this document.

## Intended use



- Only use the product in accordance with the instructions given here. In the event of damage caused by failure to observe these instructions for use, the warranty will be invalidated! Musikhaus Kirstein GmbH accepts no liability for any resulting damage.
- Unauthorised conversions or modifications to the product are not permitted for safety reasons and will also invalidate the warranty.
- Do not open or modify the unit or the power supply unit.
- Make sure that the installation complies with the standards and regulations applicable in your country.
- This product is intended for indoor use only.
- Never use or store the unit in locations exposed to extreme or humid temperatures or rain.
- Check the item for possible damage before putting it into operation.



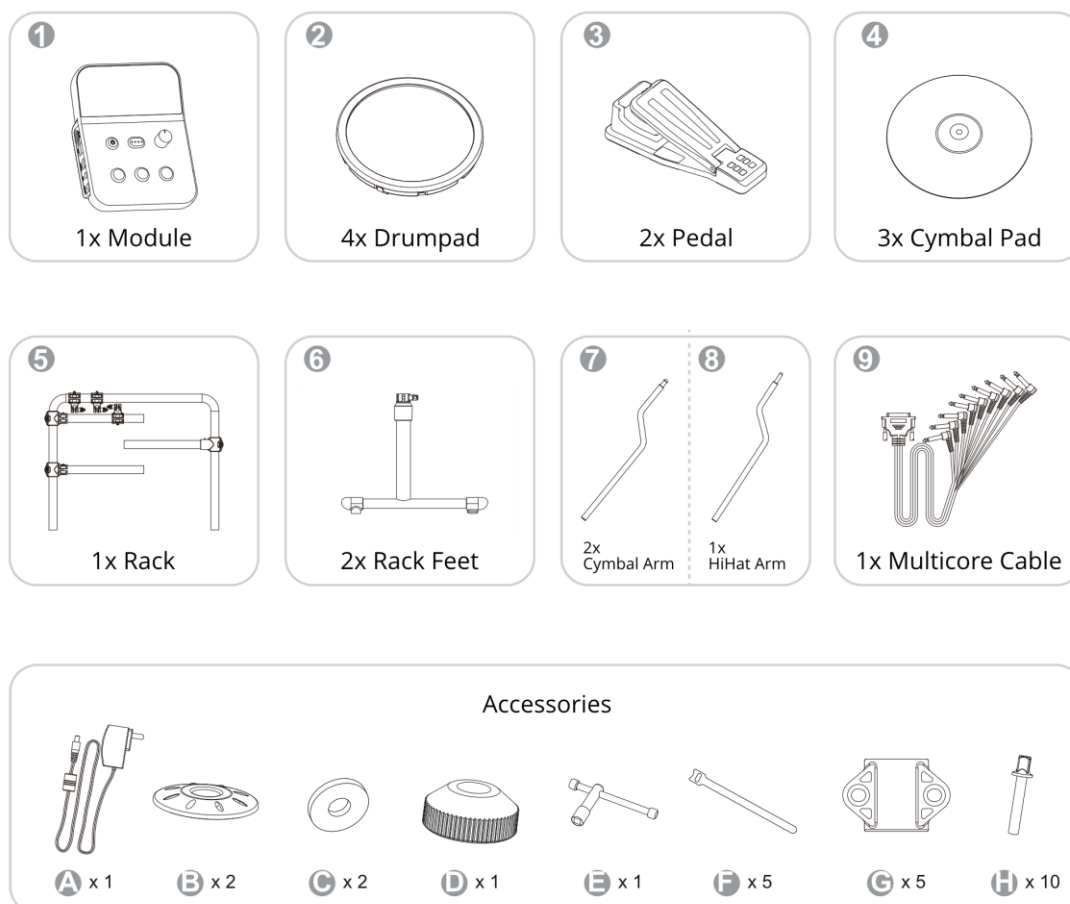
- Installation is only permitted on a stable and solid surface. An appropriate substructure may have to be provided.
- Do not place any open light sources (candles, etc.) on or near the product.
- Only operate the item from an earthed mains socket.
- Do not allow liquids or moisture to enter the housing.
- Disconnect the unit from the mains when not in use.
- Disconnect the unit from the mains during a thunderstorm.
- The unit does not contain any user-serviceable parts. Always consult appropriately trained personnel for this.
- Lay the mains cable so that people cannot fall over it.
- Turn the volume control to the lowest setting before switching on.
- Only use the mains adapter supplied with the unit. Also, make sure that the mains voltage matches the input voltage indicated on the housing of the AC adapter. Other adapters may use a different polarity or be rated for a different voltage, so their use may cause damage, malfunction or electric shock.
- Only use the mains cable supplied. Do not use the supplied mains cable with other devices. Do not twist the mains cable excessively or place heavy objects on it. It may damage the cable and cause short circuits. Damaged cables have an increased risk of fire and electric shock.
- This unit may be used in combination with an amplifier or headphones which may cause permanent hearing loss. Do not operate the unit at uncomfortable levels for extended periods of time. If you notice hearing loss or ringing in the ears, stop using the unit immediately and consult a doctor.
- Protect the unit from strong impacts. Do not drop it.
- Unplug the power supply unit at regular intervals and clean it with a dry cloth, removing all accumulations of dust and dirt from the pins. Any accumulation of dust between the mains plug and the socket may result in poor insulation and fire.
- Never climb on the unit or place heavy objects on it.
- Never touch the power supply unit with wet hands when plugging it in or unplugging it. Disconnect the power supply and all cables from external devices before moving the unit.
- Before cleaning the appliance, switch it off and disconnect the power supply from the socket.
- Do not connect this unit to the same power outlet used by an electrical appliance controlled by an inverter (e.g. refrigerator, washing machine, microwave oven) or containing a motor. Depending on how the electrical appliance is used, noise from the power supply may cause this unit to malfunction or produce audible noise.
- Using the unit near power amplifiers or other equipment with large power transformers may cause hum.
- To correct the problem, change the orientation of this unit or move it further away from the source of interference. This device may interfere with radio and television reception.
- Noise may be generated when wireless communication devices such as mobile phones are operated near this unit. Such noise may occur when receiving or initiating a call or during a conversation. If such problems occur, place such wireless devices at a greater distance from this unit or turn them off.

- Do not expose the unit to direct sunlight, place it near equipment that radiates heat, leave it in a closed vehicle or otherwise expose it to extreme temperatures. Excessive heat may deform or discolour the unit.
- If the unit is moved from one location to another where the temperature and/or humidity is very different, water droplets (condensation) may form inside the unit. Damage or malfunction may result if you try to use the unit in this condition. Therefore, leave the unit for a few hours until the condensation has completely evaporated before use.
- For daily cleaning, wipe the unit with a soft, dry cloth or a cloth slightly moistened with water. To remove stubborn dirt, use a cloth impregnated with a mild, non-abrasive detergent. Then wipe the unit thoroughly with a soft, dry cloth. Never use benzene, thinner, alcohol or solvents of any kind.

## Included Components

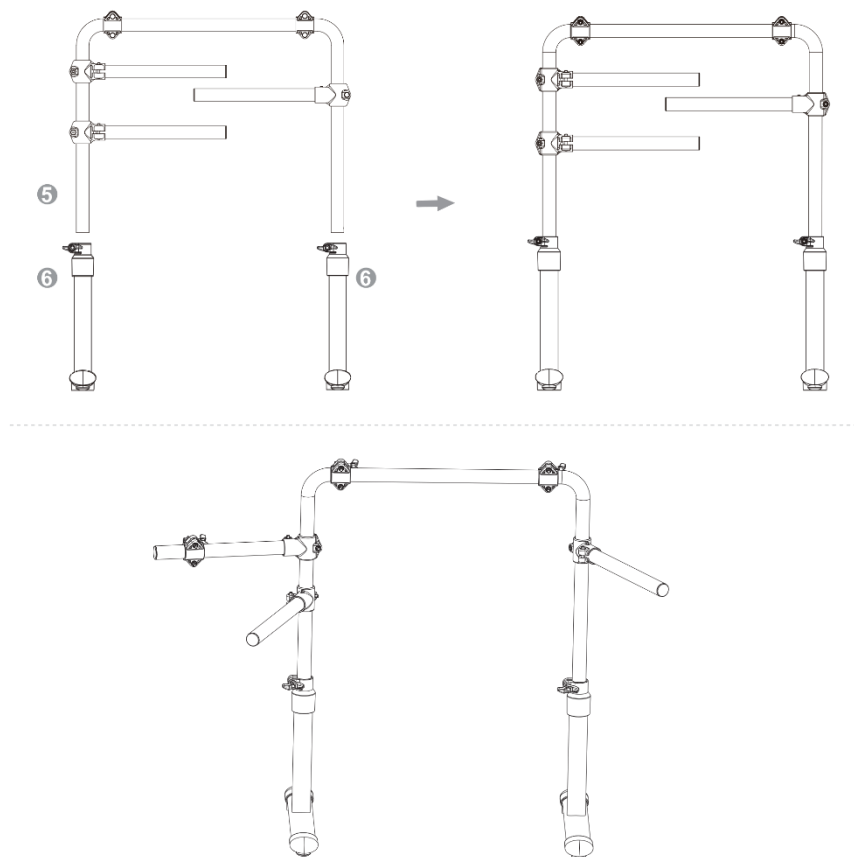
Before assembling the E-drum for the first time, please check that you have received all the components you need.

You can find a list of the included components here:

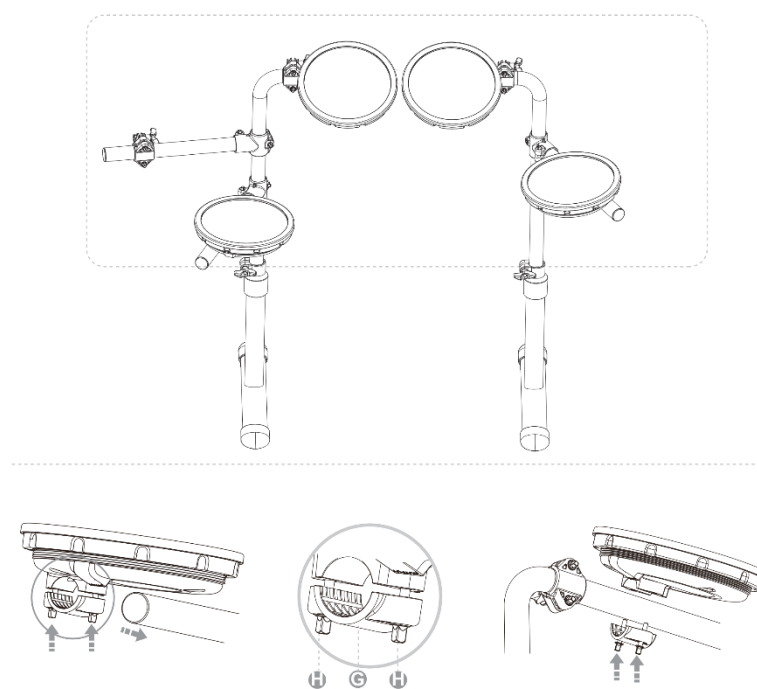


## Construction

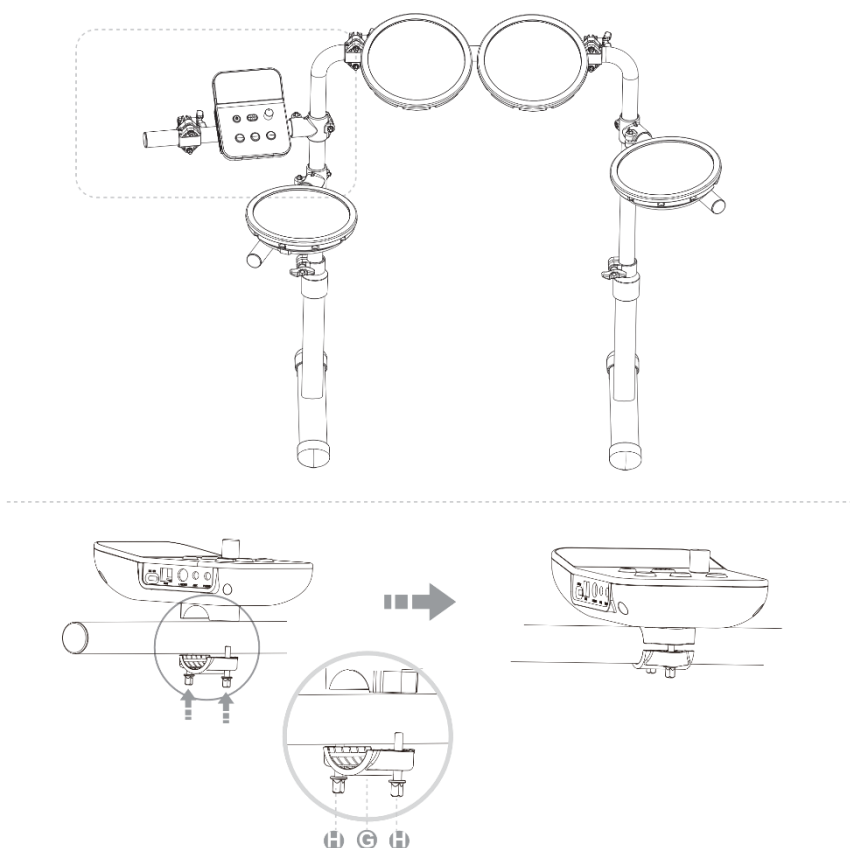
### 1. Construction of the rack system



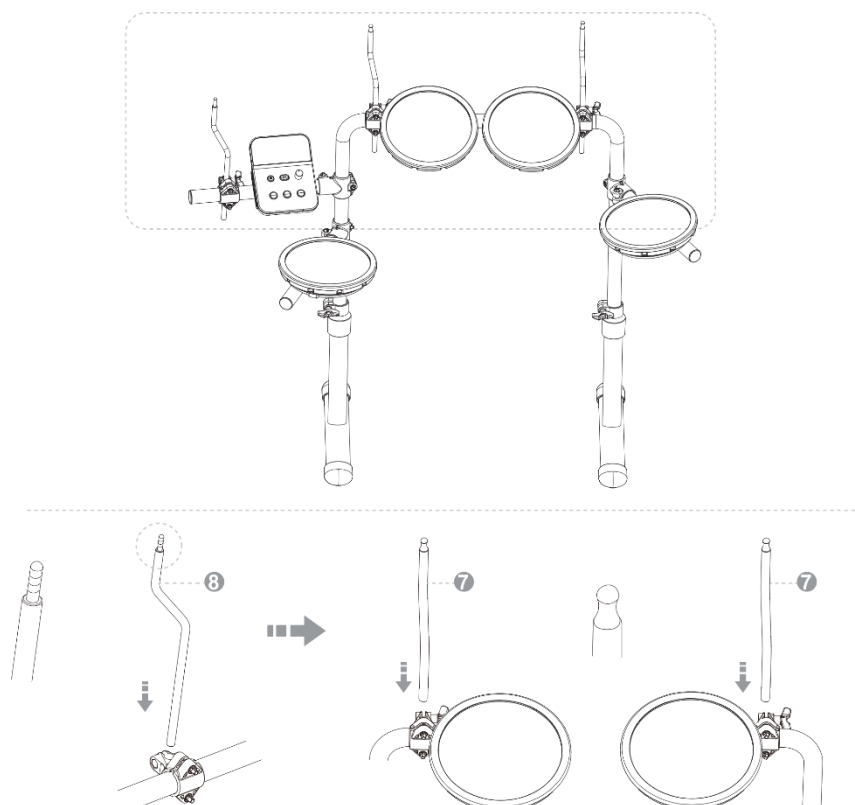
### 2. Attaching the drum pads



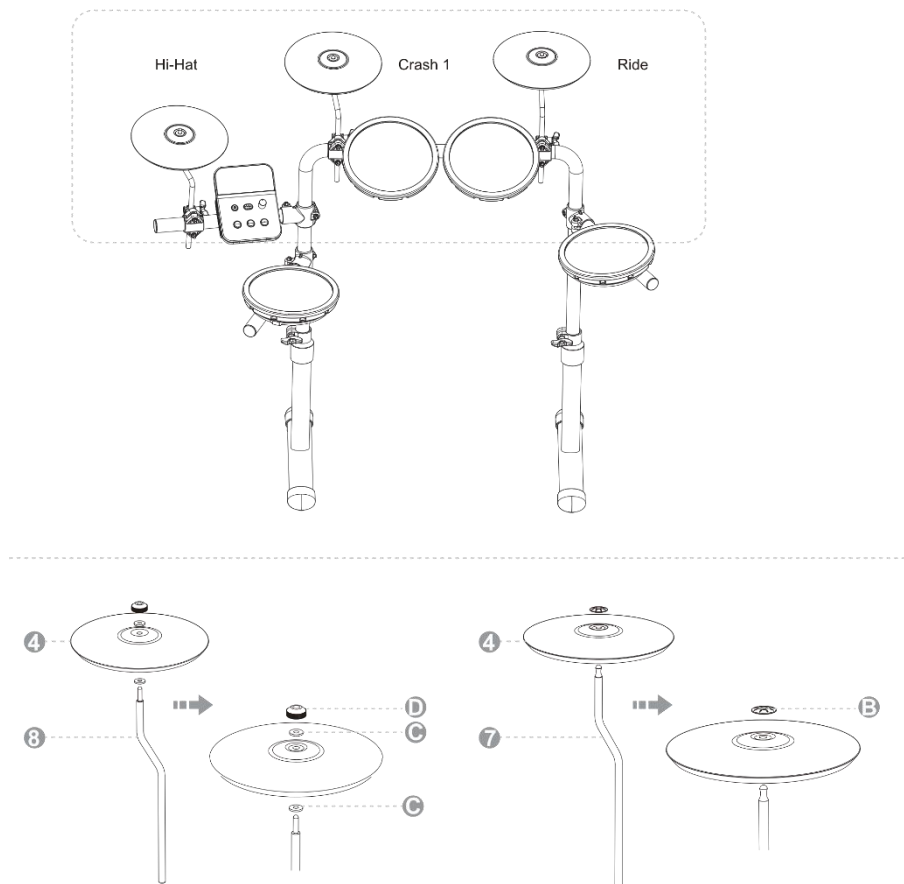
### 3. Attaching the module



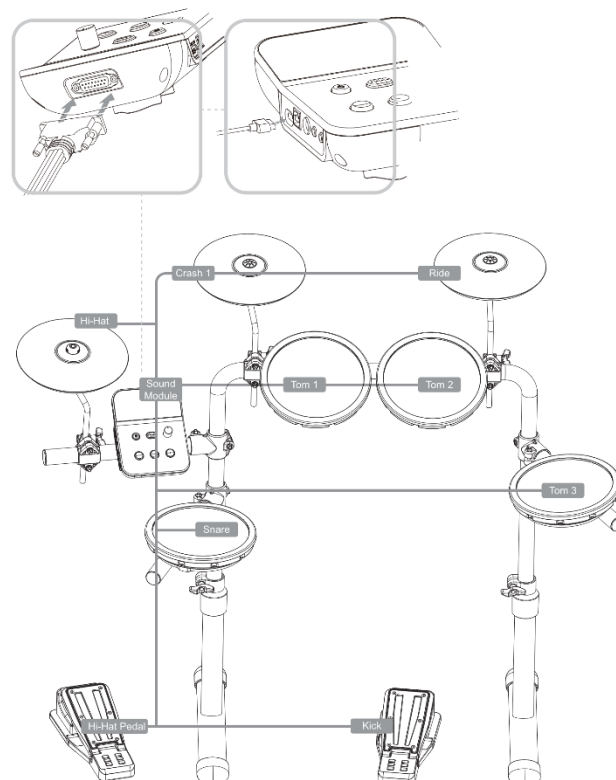
### 4. Mounting the hi-hat and cymbal arms



## 5. Attaching the hihat and cymbal pads

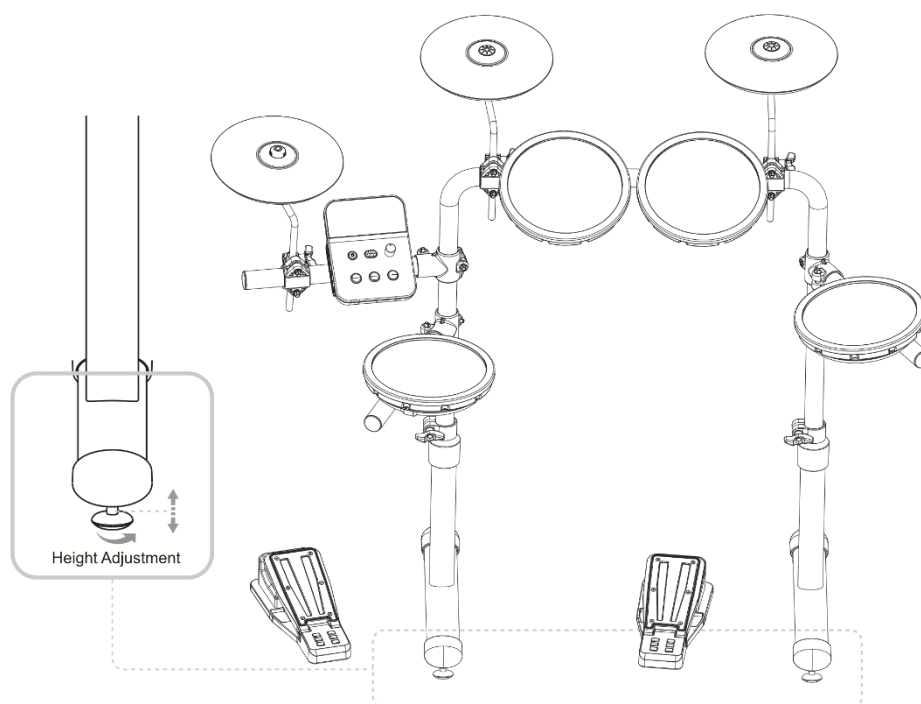


## 6. Wiring of the individual components





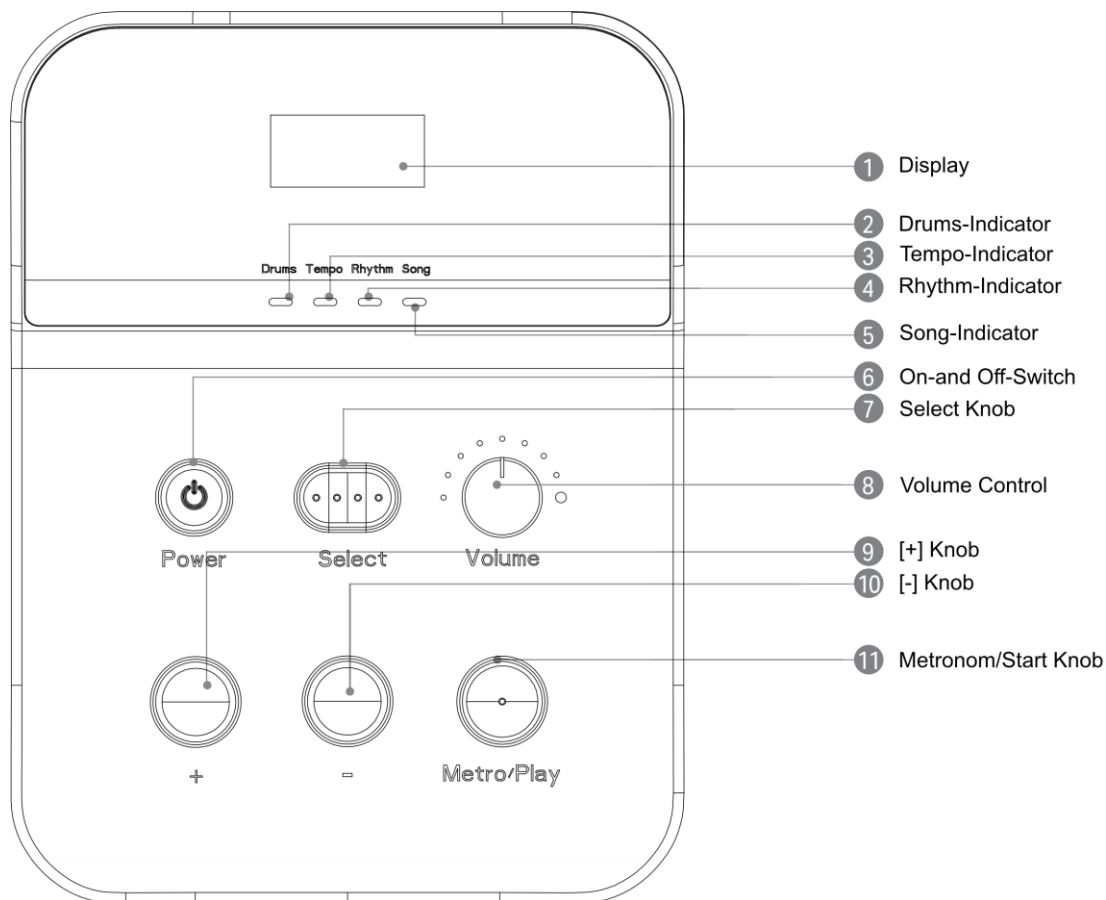
## 7. Height adjustment of the rack system



## Module specifications

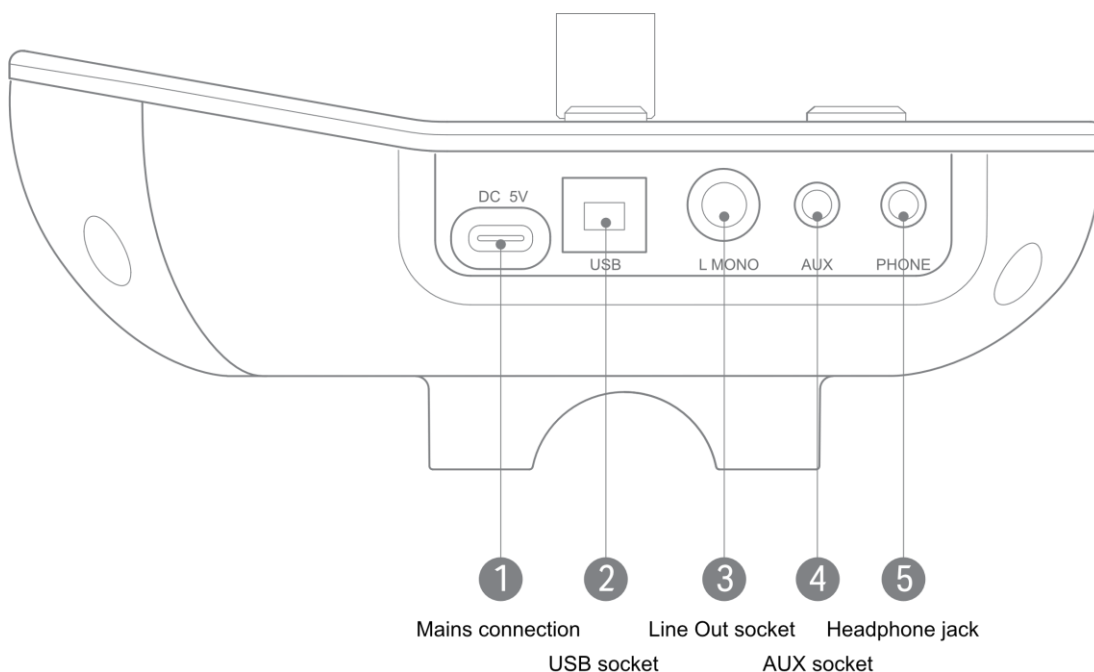
Songs	10
Preset Kits	12
Sounds	68
DSP effects	EQ, PAN
Tempo	20-320 BPM
Power supply connection	Type C, 5V, 1A
Connections	USB (USB type B, USB midi)
	AUX (3.5 mm stereo jack)
	L/Mono (6.35mm stereo jack)
	Phone (3.5 mm stereo jack)
	Components Multicore

## Module Operating elements



1. **Display:** For displaying various information.
2. **Drums indicator:** Indicates that you are in drums mode.
3. **Tempo indicator:** Indicates that you are in tempo mode.
4. **Rhythm indicator:** Indicates that you are in rhythm mode.
5. **Song indicator:** Indicates that you are in song mode.
6. **On/Off switch (Power):** Use this button to switch the module on or off.
7. **Select knob:** Use this button to select between different parameters.
8. **Volume control:** Use this knob to increase or decrease the overall volume.
9. **[+] button:** Use this button to increase various parameters.
10. **[-] button:** Use this button to decrease various parameters.
11. **Metronome and start button (Metro/Play):** various metronome functions, starting/stopping songs, usage mode and confirming factory reset.

## Module connections



### 1. Mains connection (DC 5V):

Connect the supplied type C power supply (DC 5V, 1A) here to supply the e-drum with power.

### 2. USB socket (USB):

Connect the module to your computer via USB cable (USB-A - USB-B) to send and receive midi data and to receive USB audio data.

### 3. Line-out socket (L/mono):

Use this connection to connect your e-drum to an external amplifier/active speaker/system/etc. via a 6.3 mm jack cable. This allows you to hear the sound of the instrument loudly, e.g. to play with other musicians.

### 4. AUX socket (AUX):

Connect your external audio source (mobile phone, MP-3 player, laptop, etc.) here via a 3.5 mm jack cable to play along with your own songs.

### 5. Headphone jack (Phone):

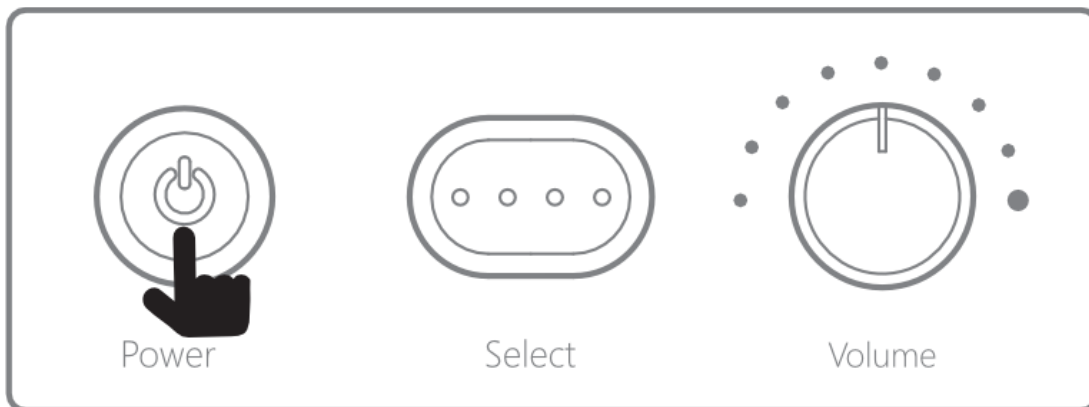
For quiet practice at home, it is recommended to use this headphone connection (3.5 mm jack). The sound continues to be played via the line-out socket even though headphones are connected.

## Get ready to play - the most important functions

### Switching on the module

1. Turn the volume control anti-clockwise to reduce the volume completely. Set the volume of the connected external amplifiers to 0 as well.
2. Press the power button to switch the unit on.
3. Now switch on the external amplifier/active box/system/etc.
4. You can carefully adjust the volume upwards now. You can check the volume meanwhile by hitting the drum pads.

\*After switching on, the module is in kit mode by default and the kit indicator lights up.



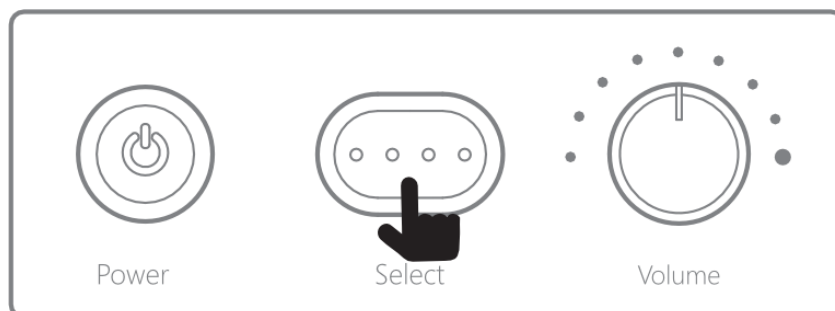
### Switching off the module

1. Press and hold the power button until the display shows "Off".
2. Minimise the volume of the connected external audio sources.
3. Switch off the external audio sources connected to the unit.

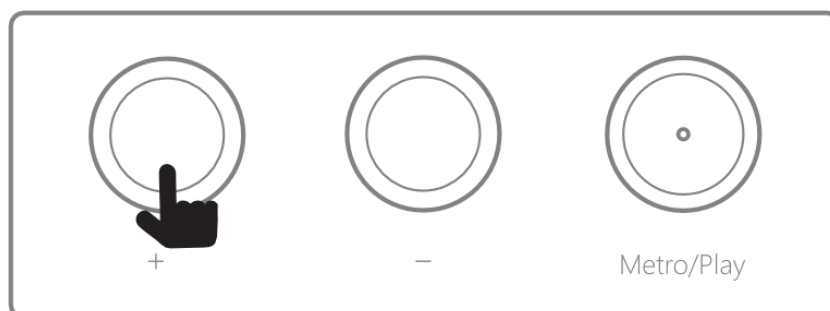


## Drum Kit Settings

1. Press the Select button to switch between the different drum kits.  
After switching on, the module is in kit mode by default and the kit indicator lights up.



2. The display shows the drum kit number, press the [+] or [-] button to select a drum kit from the list (12 in total).



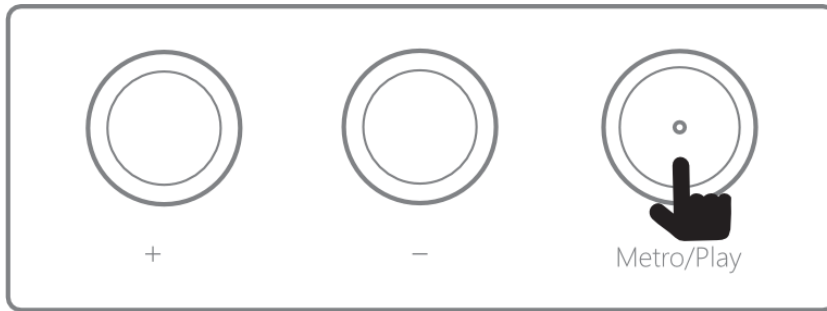
## Metronome settings

### Changing the Metronome Tempo

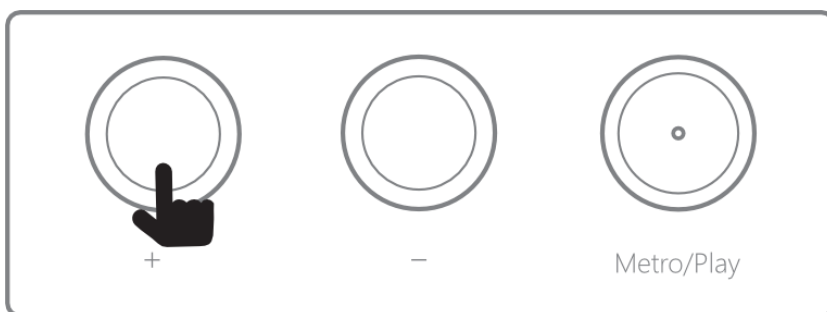
1. Press the Select button to select the tempo mode of the metronome.
2. The display shows the tempo in the form of a number.  
The tempo stands for beats per minute (bpm) and the setting range is between 20 and 320 bpm.



3. Use the metronome button (Metro/Play) to switch on the metronome. Press it again to deactivate the metronome.



4. Press the [+] or [-] buttons to change the tempo. By pressing the buttons for a long time, you can change the tempo faster.



### Changing the Metronome Volume

1. In metronome mode, long press the metronome button (Metro/Play) to adjust the metronome volume.

2. The volume value (20 levels in total) appears on the screen.












3. Press the [+] or [-] keys to change the volume.

4. Long press the metronome button (Metro/Play) to exit the volume setting and then save the settings.

Or press the Select button briefly to exit the current setup status and switch to the next mode.

### Changing the Metronome Rhythm

1. Use the Select button to select the rhythm mode of the metronome.
2. The display shows the set rhythm. In rhythm mode, press the [+] or [-] buttons to set the rhythm.

Display	Description
	1/4 means a quarter note gets one beat per bar.
	2/4 means a quarter note gets two beats per bar.
	3/4 means a quarter note gets three beats per bar.
	4/4 means a quarter note gets four beats per bar.
	5/4 means a quarter note gets five beats per bar.
	6/4 means a quarter note gets six beats per bar.
	7/4 means a quarter note gets seven beats per bar.
	8/4 means a quarter note gets eight beats per bar.
	9/4 means a quarter note gets nine beats per bar.

### Playing to a song

1. With the Select button you can switch to Song mode.
2. Use the [+] or [-] buttons to select the desired song. The display will show the current song number (10 in total).



3. Briefly press the start button (Metro/Play) to play the song. Pressing this button again pauses the song.
4. You can also activate the metronome during the song.



When the metronome is off, long press the metronome button (Metro/Play) to turn it on.

When the metronome is on, press and hold the metronome button (Metro/Play) to turn it off.

## Power saving mode

When this function is activated, the unit switches off automatically if no signal is received from one of the input sockets or the pads for a certain period of time.

1. With the power off, press and hold the metronome button (Metro/Play), then press the power button to turn the unit on.
2. The current value appears on the screen. Press the [+] or [-] to change the time of the automatic switch-off (unit: minutes).

Display	Description
	The auto power off feature is disabled if the value is 0.
	The auto power off function will activated if the value is greater than 0 and the set time exceeded becomes. (unit: minutes)

3. Press the metronome button (Metro/Play) to enter the usage mode. Press and hold the on/off (Power) button to turn off the unit and complete the setting. The setting will not be saved if abnormal operation, such as a power failure, occurs. A normal shutdown saves the current settings.

## Resetting to factory settings - Factory Reset

This procedure resets all settings of the e-drum to it's original factory setting.

1. When the unit is switched off, press and hold the Select button, then press the Power button to switch the unit on. The screen will display the following:



2. Press the metronome button (Metro/Play) to confirm the factory reset. If you want to cancel the factory reset, long press the power button to turn off the unit.

The factory settings are as follows: Drum Kit Mode (01), Song (S-01), Metronome Tempo (60), Metronome Rhythm (4/4), Metronome Volume (L-20), Power Off (00).



## Index - List of drum kits, songs and sounds

### INDEX 1 - DRUM KIT List

NUM	NAME	NUM	NAME
1	Classic	7	Pop
2	Rock	8	Gospel
3	Fusion	9	Jazz
4	Blues	10	Reggaes
5	Metal	11	Concrete
6	Funk	12	Fix

### INDEX 2 - SONG List

NUM	NAME	NUM	NAME
1	Demo 1	6	Demo 6
2	Demo 2	7	Demo 7
3	Demo 3	8	Demo 8
4	Demo 4	9	Demo 9
5	Demo 5	10	Demo 10

### INDEX 3 - VOICE List

1	Crash-B-Track 1.B_16-Edgep
2	Crash-B-Track 1.M_17-Edgep
3	Crash-Z.K_16 Edge
4	Crash-Z-Track 1.K_18 Edgep
5	Crash-Z-Track 1.A_18 Edgep
6	Crash1-Synth Arena 1
7	Crash1-Stab Jack 5
8	HH-Chick-B.B_14
9	HH-Chick-Master 14
10	HH-Chick-I.AX_17
21	HH-Open-Master 14-Edge
22	HH-Open-I.AX_17-Edge
23	HH-Open-Z.K_14-Edge
24	HH-Open-Z.A_14-Edge
25	HH-Open-Concrete 4
26	HH-Open-Alphabetical
27	Kick-Blues 7
28	Kick-Classic 7
29	Kick_fusion-7
30	Kick-Metal 7
31	Kick-Rock 7
32	Kick-Concrete 4
33	Kick-Ganja 4
34	Ride-Z.K_20 Top
35	Ride-Z.A_20 Top
36	Ride-B.M_20-Top
37	Ride-Master 20-Top3p
38	Ride-M.S_22-Top 3p
39	Ride-Clap Jack 3
40	Ride-Orgami
41	Snare-Blues 9
42	Snare-Classic 9
43	Snare-9_fusion
44	Snare-Metal 9

11	HH-Chick-Bass Concrete 1
12	HH-Chick-Shaker BottlePoppin 2
13	HH-Closed-B.B_14-Edge 3
14	HH-Closed-Master 14-Edge 3
15	HH-Closed-I.AX_17-Edge 3
16	HH-Closed-Z.K_14-Edge 3
17	HH-Closed-Z.A_14-Edge 3
18	HH-Close-Concrete 4
19	HH-Close-Alphabetical 1
20	HH-Open-B.B_14-Edge
45	Snare-Rock 9
46	Snare-Concrete 7
47	Snare-Arena 2
48	Tom1-Blues 5
49	Tom1-Classic 5
50	Tom1-5_fusion
51	Tom1-Metal 5
52	Tom1-Rock 5
53	Tom1-Dakeat 2
54	Tom1-Buzz Dakeat 1
55	Tom2-Blues 5
56	Tom2-Classic 5
57	Tom2-5_fusion
58	Tom2-Metal 5
59	Tom2-Rock 5
60	Tom2-Dakeat 3
61	Tom2-SFX Dakeat 2
62	Tom3-Blues 5
63	Tom3-Classic 5
64	Tom3-5_fusion
65	Tom3 -Metal 5
66	Tom3-Rock 5
67	Tom3-SFX Dakeat 2
68	Tom3-Buzz Dakeat 3

## Midi notes of the pads

Kick	Midi Note 0x24
Snare	Midi Note 0x26
Tom 1	Midi Note 0x30
Tom 2	Midi Note 0x2d
Tom 3	Midi Note 0x2b
HiHat Open	Midi Note 0x2e
HiHat Closed	Midi Note 0x2a
HPedal	Midi Note 0x2c
Crash	Midi Note 0x31
Ride	Midi Note 0x33

## WEEE Declaration (Waste of Electrical and Electronic Equipment)

Your product has been designed and manufactured using high quality materials and components that are recyclable and reusable. The symbol means that your product must be disposed of separately from household waste at the end of its life. Dispose of this appliance at your local collection point or recycling centre. Please help protect the environment in which we all live.

All technical data and appearances are subject to change without notice. All information was correct at the time of going to press. Musikhaus Kirstein GmbH does not guarantee the accuracy or completeness of the descriptions, photographs or statements contained in this manual. Printed colours and specifications may differ slightly from the product. Musikhaus Kirstein GmbH products are only sold through authorised distributors. Distributors and dealers are not representatives of Musikhaus Kirstein GmbH and are not authorised to legally bind Musikhaus Kirstein GmbH in any way.



**Musikhaus Kirstein GmbH**  
**Bernbeurener Str. 11**  
**86956 Schongau - Germany**  
**Telefon/Phone: 0049-8861-909494-0**  
**Fax: 0049-8861-909494-19**

