

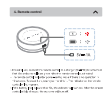
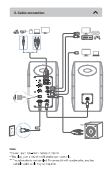
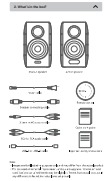


see Manual

**1. Quick Start**

1.1 Unboxing

1.2 Safety Precautions



**5. Troubleshooting**

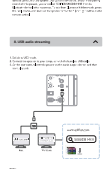
5.1 No sound

5.2 Distorted sound

5.3 Overheating

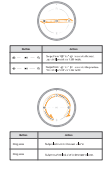
**6. Technical Specifications**

Parameter	Value
Model	S880D MKII
Power	2x 10W
Frequency Response	20Hz - 20kHz
Impedance	16Ω
Dimensions	180x100x100mm
Weight	1.5kg



**9. Warranty**

Item	Warranty
Speaker	2 Years
Remote Control	1 Year



**11. Index**

Section	Page
1. Quick Start	1
2. Main Features	2
3. Basic Operation	3
4. Audio Settings	4
5. Troubleshooting	5
6. Technical Specifications	6
7. Remote Control	7
8. Package Contents	8
9. Warranty	9
10. Contact Us	10

**12. Notes**

12.1 Please read the manual carefully before using the product.

12.2 Do not use the product in a humid or dusty environment.

12.3 Do not touch the speaker drivers with your hands.

12.4 Do not use the product for extended periods of time.

12.5 Do not use the product near heat sources.

12.6 Do not use the product near flammable materials.

12.7 Do not use the product near water.

12.8 Do not use the product near children.

12.9 Do not use the product near pets.

12.10 Do not use the product near electrical appliances.