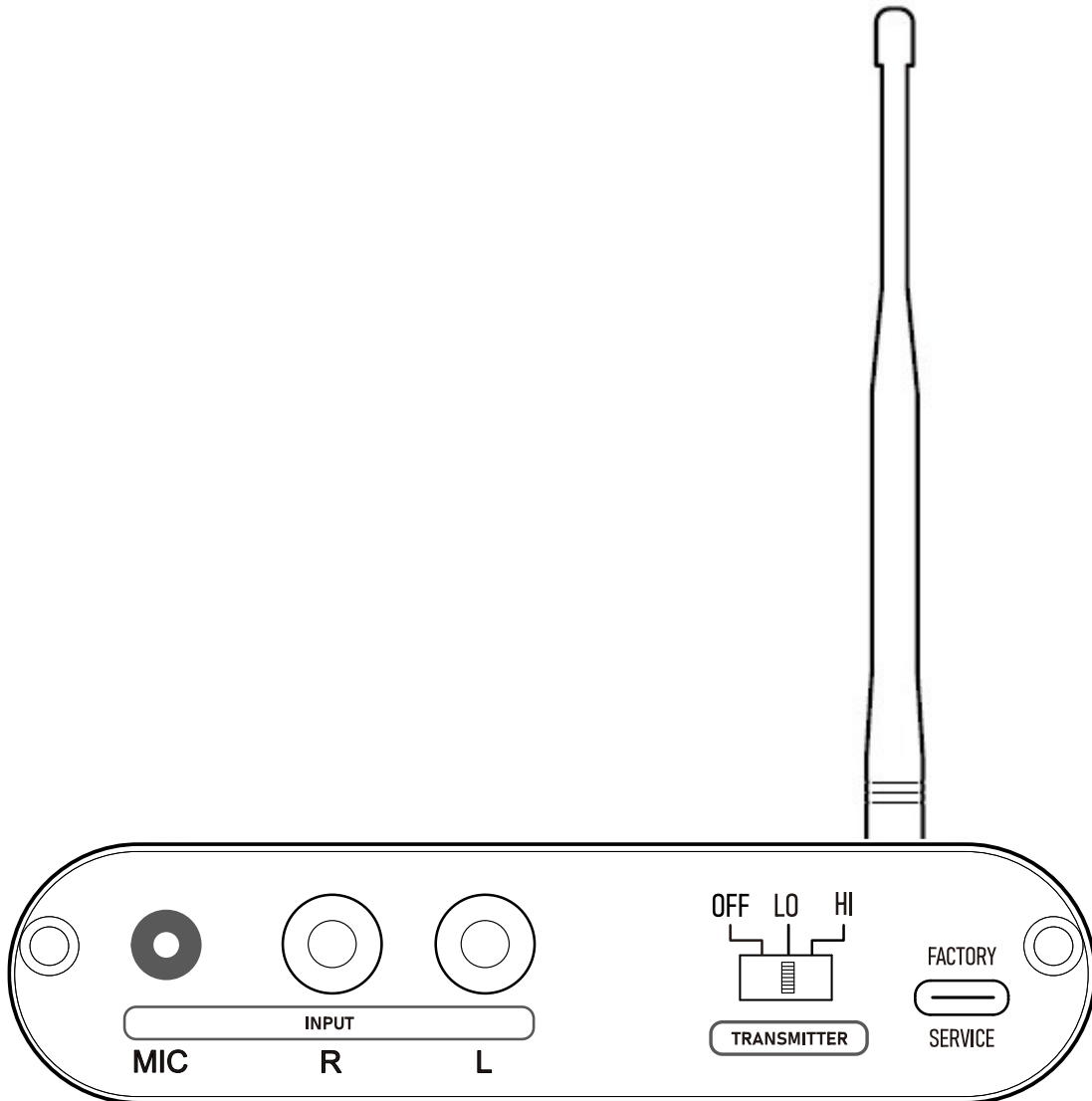




# Pronomic SDT-40 Silent Disco V2 Transmitter

Item no.: 00114942



## Instruction manual

Version: 10.2025

© 2025

This user manual is protected by copyright. Reproduction of this user manual, even in part, is only permitted with the permission of Musikhaus Kirstein GmbH. The same applies to the reproduction or copying of images, even in modified form.

## **Contents**

<b>Detailed safety instructions:</b> .....	<b>2</b>
<b>Scope of delivery:</b> .....	<b>3</b>
<b>Technical data:</b> .....	<b>3</b>
<b>Functions</b> .....	<b>4</b>
<b>Establishing a connection:</b> .....	<b>6</b>
<b>Diagram:</b> .....	<b>7</b>
<b>FAQ / Troubleshooting</b> .....	<b>8</b>
<b>Maintenance</b> .....	<b>8</b>
<b>Cleaning</b> .....	<b>8</b>
<b>WEEE Declaration (Waste Electrical and Electronic Equipment)</b> .....	<b>9</b>

Thank you for choosing this Silent Disco V2 transmitter.

To ensure that you are completely satisfied with this product, please read and understand this user manual carefully before using our product. Keep this user manual in a safe place. The user manual must be passed on to all subsequent users.



Observe the operating instructions!



**WARNING**

The signal word **WARNING** indicates hazards that could result in serious injury if precautions are not taken.



**NOTE**

The signal word **NOTE** indicates general precautions that should be observed when handling the product.



**NOTE**

Images and screen displays in this operating manual may differ slightly from the appearance of the actual product, as long as this does not have any negative effects on the technical properties and safety of the product.



**NOTE**

All personal pronouns in this operating manual are to be considered gender-neutral.

This operating manual is intended for persons who are supervised by a person responsible for their safety or who have been instructed in the operation of the device and have demonstrated that they are capable of handling the device.



**WARNING**

**Children should be supervised to ensure that they do not play with the device.  
Do not leave children unattended.**

All information in this operating manual has been checked to the best of our knowledge and belief. However, neither the author nor the publisher can be held liable for any damage arising from the use of this operating manual.

Other product, brand and company names mentioned in this document may be the trademarks of their respective owners. Compliance with all applicable copyright laws is the responsibility of the user of this document.

---

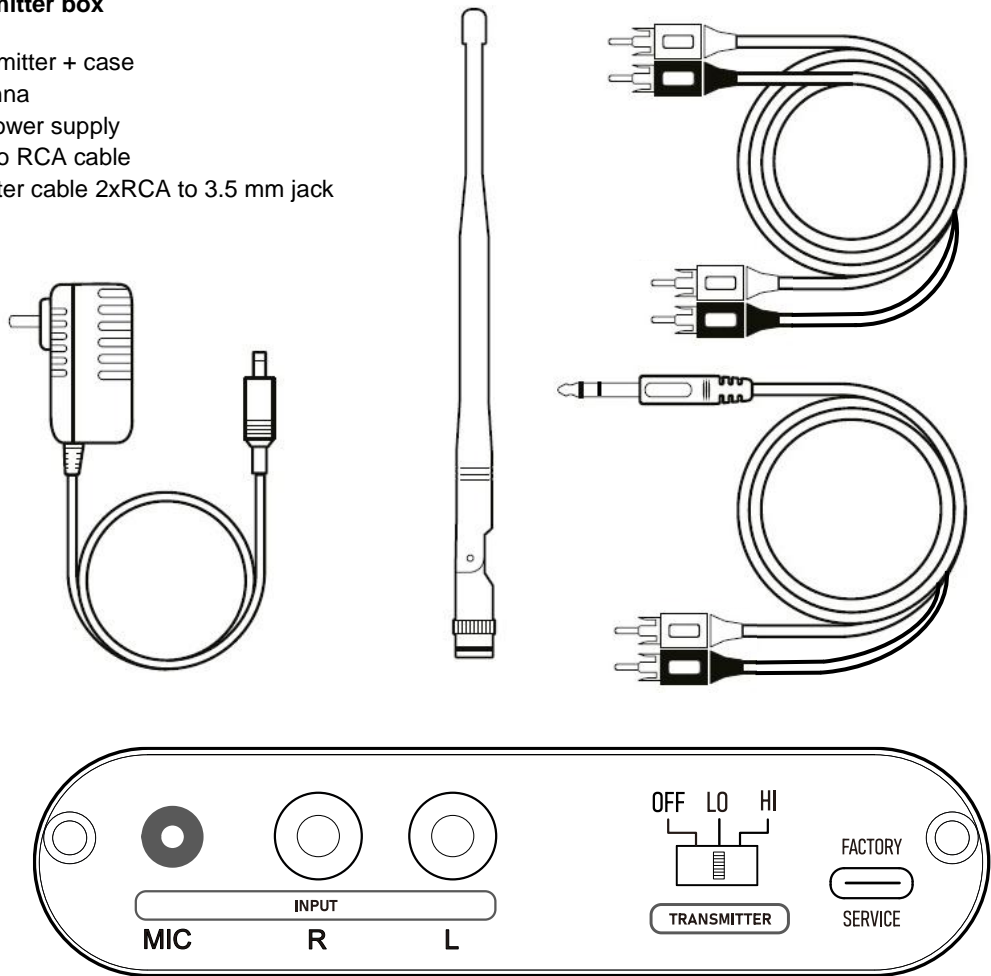
**Detailed safety instructions:**

- Read these instructions.
- Keep this manual.
- Heed all warnings.
- Follow all instructions.
- Do not use this device near water.
- Clean the device only with a dry cloth.
- Do not block any ventilation openings.
- Do not place the device near heat sources such as radiators, stoves or other devices that generate heat.
- Ensure that the power cord is not pinched, strained or damaged in any way.
- Only use accessories recommended by the manufacturer.
- Only use stands, tripods, brackets or tables specified by the manufacturer or sold with the device. Handle with care to avoid injury.
- Unplug this device during thunderstorms or when you are not using it for a long period of time.
- Refer all servicing to qualified service personnel. Servicing is required when the unit has been damaged in any way, such as when the power cord or plug is damaged, liquid has been spilled or objects have fallen into the unit, the unit has been exposed to rain or moisture, does not operate normally, or has been dropped.

**Scope of delivery:**

**Transmitter box**

- 1 transmitter + case
- 1 antenna
- 1 9V power supply
- 1 stereo RCA cable
- 1 adapter cable 2xRCA to 3.5 mm jack

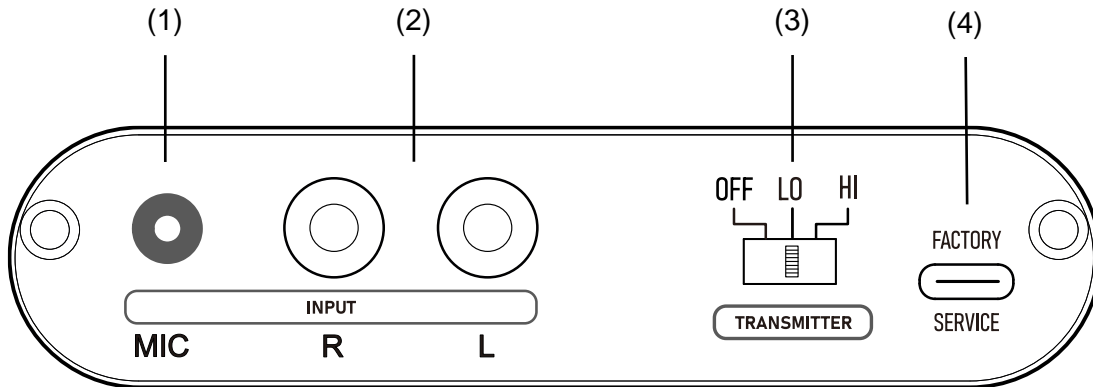


**Technical data:**

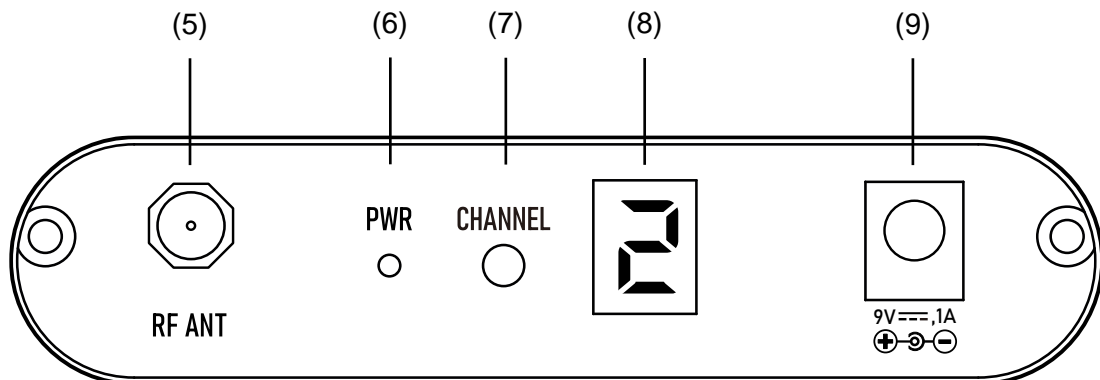
- Frequency band (EU harmonised):** Within 863-865 MHz
- Transmission power (e.r.p):** < 10mW
- Channels:** 3
- Power supply/power source:** 9V/1000mA
- Battery (lithium):** 3.7V/1000mAh

**Functions**

**Figure A:**



1. **MIC** microphone input 3.5 mm mini jack:  
You can mix your own signals into the audio transmission via a connected cable microphone.
2. **R-L** RCA input:  
Connect your mixer or audio device to the R+L RCA sockets.
3. **OFF-LO-HI** switch:  
This switch turns on the transmitter and selects the power level at which transmission takes place.  
Switch to LO for low transmission power. The transmission distance will then be approx. 30 meters. When you disconnect the device from the power supply, it will always transmit at low power. The built-in battery ensures that the transmitter does not fail in the event of short-term power failures.  
Switch to HI for high transmission power. The transmission distance will then be approx. 100 meters. Please note: this increased power is only available when the transmitter is connected to a power source via a DC 9V adapter.
4. **FACTORY SERVICE:**  
Do NOT use this connection to charge or operate your device. This connection is for updating the device and should only be used by customer service.

**Figure B:**


5. **RF ANT** - Antenna connection:  
The antenna is attached with a screw connection.
6. **PWR** - Power:  
The PWR LED lights up green when the device is charging but switched off. The LED changes to red as soon as the device is switched on. The transmitter is designed for operation on the mains power supply (9V power supply unit) and has a built-in rechargeable battery to increase operational reliability.
7. **CHANNEL** - Channel:  
This button changes the channel of the transmitter. Press it to switch between channels 1, 2, 3. The LED display shows the currently selected channel. Please note: If you are using several transmitters at the same time, make sure that each transmitter is set to a different transmission channel.
8. **LED DISPLAY:**  
The display shows the set transmission channel
9. **9V-1A:**  
Connect the supplied power adapter to this socket to operate the device and charge the battery. While the transmitter is connected to a power source with this cable, it can be operated in high-power mode. (See Figure A, point 3)

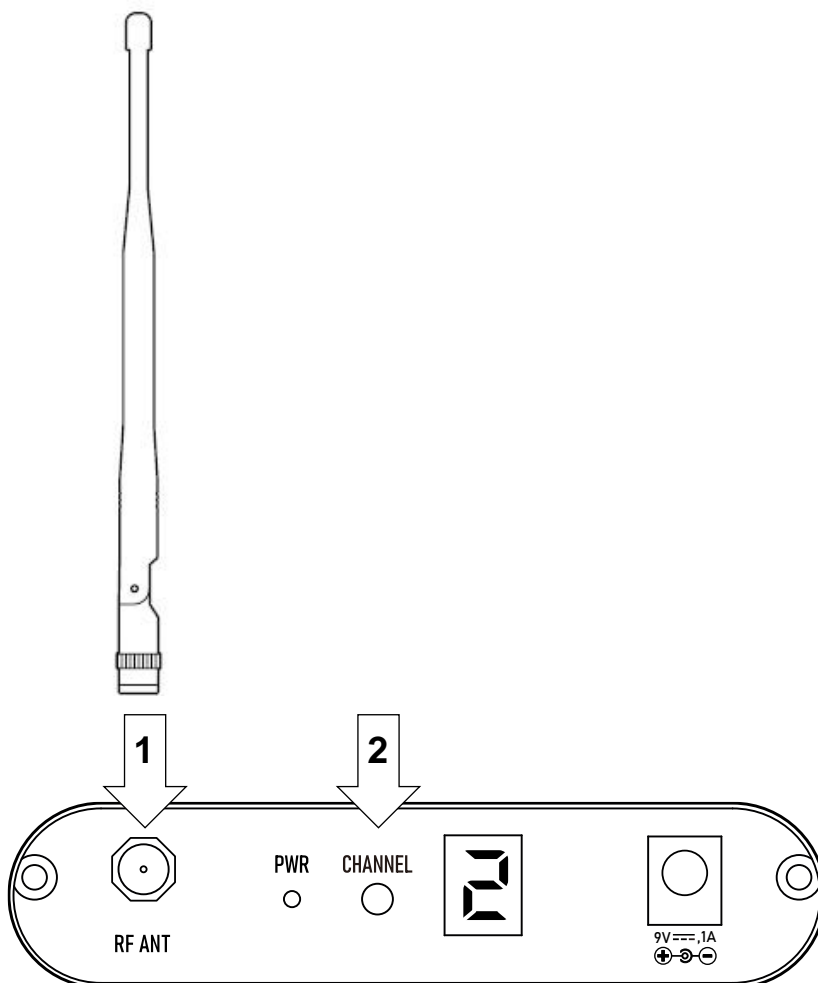
## Establishing a connection:

The transmitter is very easy to connect. A problem-free, high-quality connection can only be achieved with accessories (headphones or receivers) from the Pronomic Silent Disco V2 series. Simply follow these steps:

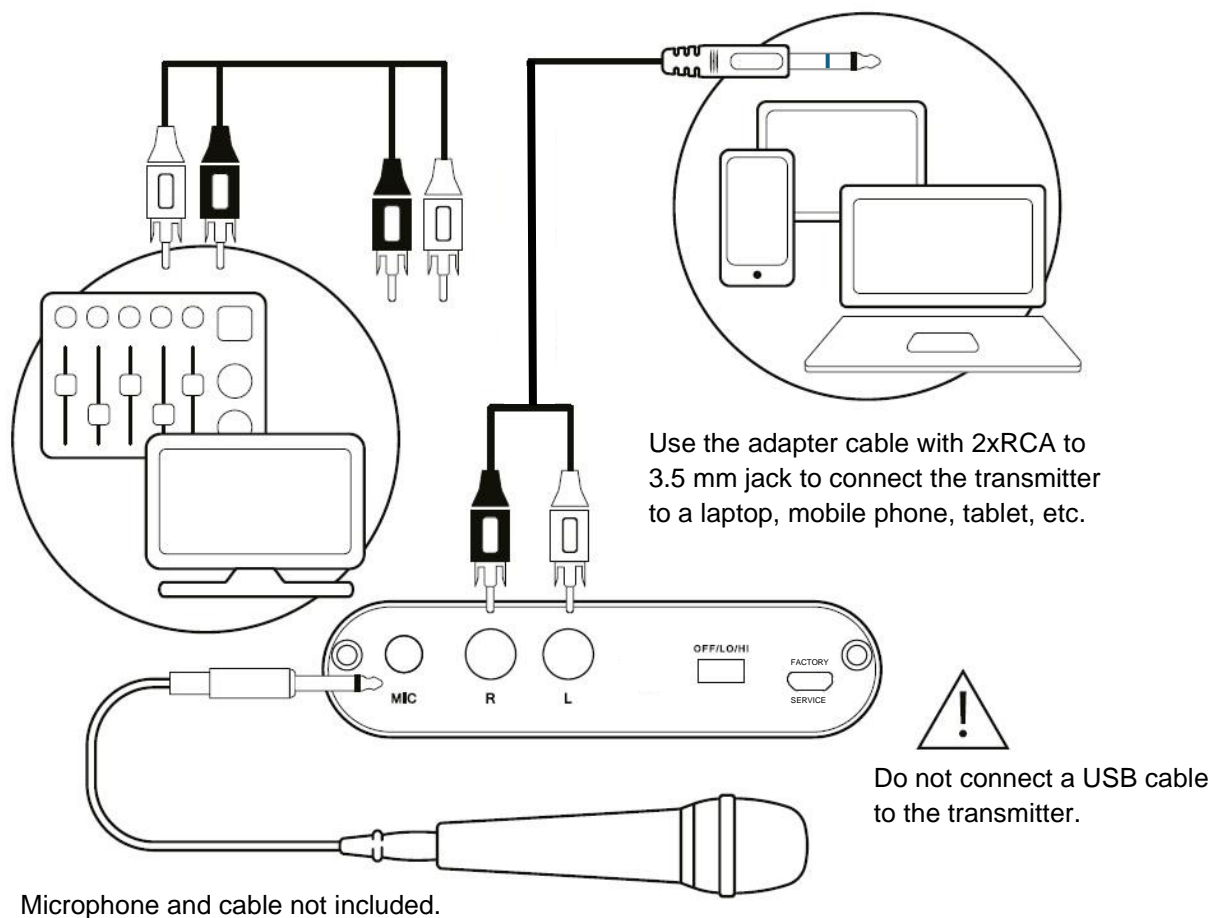
1. Attach the antenna to the transmitter. (Arrow 1)
2. Connect a cable to the audio output of the music source and the RCA input of the transmitter. (See diagram)
3. Connect a microphone to the input on the transmitter to mix its signal with the audio signal. (See diagram)
4. Select the transmission power of the transmitter (see Figure A).
5. Select the channel on which to transmit by pressing the Channel button (arrow 2).
6. Switch on your headphones and select the appropriate channel using the TUNE button (available models in the "Silent Disco V2" series).
7. Adjust the volume of the headphones to your liking.

**CAUTION:** Listening at high volumes can damage your hearing!

With this setting, the signal from the transmitter is transmitted wirelessly to all connected headphones. Make sure that the channel assignment of the transmitter and receiver (headphones) is identical and that you are within the transmission range of the system.



**Diagram:**



## FAQ/ Troubleshooting:

Why can't I hear any sound from the connected headphones?

- Ensure that the headphones are set to the same channel as the transmitter and that compatible Silent Disco V2 headphones are being used.
- Double-check the volume settings of:
  - o Music source
  - o Audio devices connected to the transmitter
  - o Connected headphones
- Check the connection between the music source and the audio input.
- Ensure that the battery is fully charged for both the transmitter and the headphones.

How many connected devices can be used simultaneously?

- An unlimited number of devices can be used simultaneously.

Is there a pairing process to connect additional headphones?

- No, there is no pairing process other than selecting the appropriate channel with the TUNE button on the headphones.

What is the transmission range on HI or Lo settings?

- On the "**HI**" setting, the functional range is approximately 100 metres.
- On the "**LO**" setting, the functional range is approximately 30 metres.

What is the expected battery life for headphones and transmitters when the devices are used in remote access mode?

- The headphones have an operating time of approximately 8 hours. The transmitter has an operating time of approximately 5 hours before it needs to be recharged.
- Please charge the devices for at least 6 hours.

## Maintenance

Your device does not require any special maintenance. However, in the event of a malfunction, please contact an authorised service centre or [Kirstein.de](http://Kirstein.de).

## Cleaning

Use a lint-free, slightly damp cloth for cleaning.

## WEEE declaration (Waste Electrical and Electronic Equipment)

Your product has been designed and manufactured using high-quality materials and components that are recyclable and reusable. The symbol indicates that your product must be disposed of separately from household waste at the end of its service life.

Dispose of this device at your local collection point or recycling centre. Please help to protect the environment in which we all live.

## CE Conformity SIMPLIFIED EU DECLARATION OF CONFORMITY

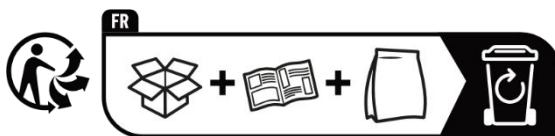
Musikhaus Kirstein GmbH hereby declares that the radio equipment type [Pronomic SDH-340] complies with Directive 2014/53/EU. The full text of the EU Declaration of Conformity is available at the following internet address:

[https://www.kirstein.de/docs/manuals/00114942 /conformity\\_declaration\\_EN.pdf](https://www.kirstein.de/docs/manuals/00114942 /conformity_declaration_EN.pdf)

All technical data and appearances are subject to change without prior notice. All information was correct at the time of printing. Musikhaus Kirstein GmbH does not guarantee the accuracy or completeness of the descriptions, photos or statements contained in this manual. Printed colours and specifications may differ slightly from the product. Musikhaus Kirstein GmbH products are only sold through authorised dealers. Distributors and dealers are not representatives of Musikhaus Kirstein GmbH and are not authorised to bind Musikhaus Kirstein GmbH legally in any way.

 **KIRSTEIN.de**

Musikhaus Kirstein GmbH  
Bernbeurener Str. 11  
D-86956 Schongau  
Telephone: 0049-8861-909494-0  
[info@kirstein.de](mailto:info@kirstein.de)



Points de collecte sur [www.quefairedemesdechets.fr](http://www.quefairedemesdechets.fr)  
Privilégiez la réparation ou le don de votre appareil !