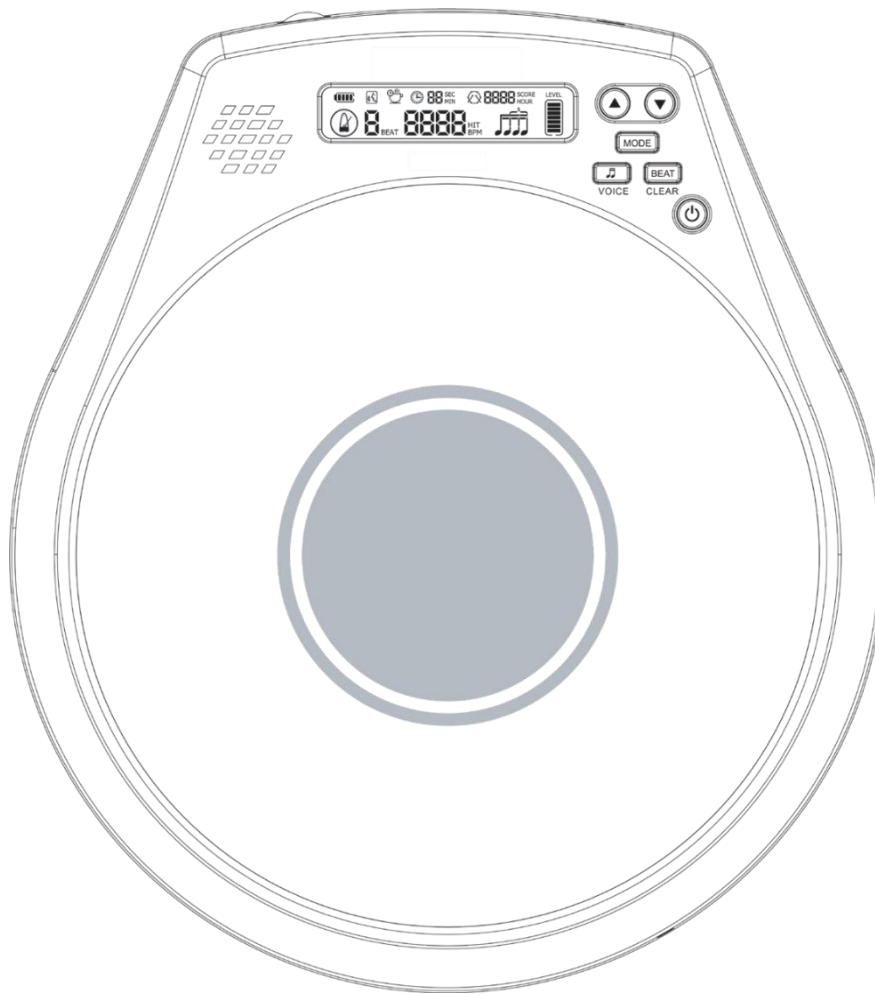




# XDrum DT-1000 Drum Trainer

Item no.: 00101240



## Operating instructions

Revision: 10/2024



These operating instructions are protected by copyright. Reproduction of these operating instructions, even in part, is only permitted with the permission of Musikhaus Kirstein GmbH. The same applies to the reproduction or copying of images, even in modified form.

## **Contents**

<b>Intended use .....</b>	<b>1</b>
<b>Charging process .....</b>	<b>3</b>
<b>Control panel and functions .....</b>	<b>3</b>
<b>Metronome mode .....</b>	<b>4</b>
<b>Counting mode .....</b>	<b>4</b>
<b>Tempo mode .....</b>	<b>5</b>
<b>Strength indicator of pad strokes .....</b>	<b>5</b>
<b>Connection of external devices .....</b>	<b>5</b>
<b>Practice time .....</b>	<b>5</b>
<b>Power saving mode .....</b>	<b>5</b>
<b>Specifications .....</b>	<b>6</b>
<b>WEEE declaration (Waste of Electrical and Electronic Equipment) .....</b>	<b>6</b>

Thank you for purchasing this product.

To ensure that you are completely satisfied with this product, please read and understand this user manual carefully before using our product. Keep these operating instructions in a safe place. The operating instructions must be passed on to all subsequent users.



Observe the operating instructions!



The signal word **WARNING** indicates dangers that could lead to serious injury if precautions are not taken.



The signal word **NOTICE** indicates general precautionary measures that should be observed when handling the product.



Images and screen displayed in these operating instructions may differ slightly from the appearance of the actual product as long as this has no negative impact on the technical properties and safety of the product.



All personal formulations in these operating instructions are to be regarded as gender neutral.

These operating instructions apply to persons who have been supervised or instructed in the operation of the appliance by a person responsible for their safety and who have demonstrated that they can handle the appliance.

All information in these operating instructions has been checked to the best of our knowledge and belief. However, neither the author nor the publisher can be held liable for any damage arising in connection with the use of these operating instructions.

Other product, brand and company names mentioned in this document may be the trademarks of their respective owners. Compliance with all applicable copyright laws is the responsibility of the user of this document.

## Intended use



- Only use the product in accordance with the instructions given here. Failure to follow these instructions will invalidate the warranty! Musikhaus Kirstein GmbH accepts no liability for any resulting damage.
- Unauthorized conversions or modifications to the product are not permitted for safety reasons and will also invalidate the warranty.
- Do not open or modify the device or the power supply unit.
- The device does not contain any user-serviceable parts. Always consult appropriately trained specialist personnel.
- Only have the fuse checked or replaced by trained specialists. Disconnect the appliance from the power supply beforehand.
- The appliance contains live parts. Therefore, do not open the housing.
- Make sure that the installation complies with the standards and regulations applicable in your country.
- This product is intended for indoor use only.
- Never use or store the device in places exposed to extreme or humid temperatures or rain.
- Do not allow any liquids or moisture to penetrate the housing.
- Do not expose the device to direct sunlight, place it near devices that radiate heat, leave it in a closed vehicle or otherwise expose it to extreme temperatures. Excessive heat can deform or discolor the device.
- Protect the device from strong impacts. Do not drop it.
- Do not apply force to the controls.
- Check the item for possible damage before putting it into operation.



- Installation is only permitted on a stable and solid surface. An appropriate substructure may need to be provided.
- Do not cover the ventilation openings.
- Do not place any open light sources (candles, etc.) on or next to the product.
- Never climb on the appliance or place heavy objects on it.
- Only operate the product from an earthed mains socket.
- Only use the mains voltage specified for the appliance. The required voltage can be found on the rating plate of the appliance.
- Disconnect the appliance from the power supply when not in use.
- Disconnect the appliance from the mains during a thunderstorm.
- Keep the original packaging for warranty claims and safe transportation.
- Lay the mains cable/power supply unit so that people cannot fall over it.
- Only use the power supply unit supplied with the device. Also ensure that the mains voltage matches the input voltage specified on the housing of the power adapter. Other adapters may use a different polarity or be designed for a different voltage, so that their use may result in damage, malfunctions or electric shocks.
- The mains cable supplied must not be used with other devices. Do not twist the power cable excessively and do not place any heavy objects on it. This can damage the cable and lead to short circuits. Damaged cables pose an increased risk of fire and electric shock.
- Do not plug or unplug the mains cable/power supply unit with wet hands.
- Unplug the mains cable/power supply unit at regular intervals and clean it with a dry cloth by removing all dust and dirt from the pins. Any accumulation of dust between the mains plug and the socket can lead to poor insulation and fire.
- Do not connect this appliance to the same socket used by an electrical appliance that is controlled by an inverter (e.g. refrigerator, washing machine, microwave) or that contains a motor. Depending on the way the electrical appliance is used, noise from the power supply may cause this appliance to malfunction or cause audible interference.
- This device may interfere with radio and television reception.
- Interference noise can be generated when wireless communication devices such as cell phones are operated near this device. Such noise may occur when receiving or initiating a call or during a conversation. If such problems occur, you should place such wireless devices at a greater distance from this device or switch them off.
- If the appliance is moved from one place to another where the temperature and/or humidity is very different, water droplets (condensation) may form inside the appliance. Damage or malfunctions may result if you attempt to use the appliance in this condition. Therefore, allow the appliance to reach room temperature for a few hours before use so that the condensation has completely evaporated.
- For daily cleaning, wipe the appliance with a soft, dry cloth or a cloth slightly moistened with water. To remove stubborn dirt, use a cloth impregnated with a mild, non-abrasive cleaning agent. Then wipe the appliance thoroughly with a soft, dry cloth. Never use benzene, thinner, alcohol or solvents of any kind.
- Turn the volume control to the lowest level before switching on.
- Depending on the setting, this product can generate a high volume that can cause permanent hearing damage to the user. Therefore, avoid prolonged exposure to high volumes. If you notice hearing loss or ringing in the ears, you should stop using the device immediately and consult a doctor.
- Keep spare parts, batteries and accessories out of the reach of children, as they can be a potential choking hazard.



1. **Volume control:** This allows you to adjust the overall volume.
2. **USB type C port:** For connecting to a power socket to charge the device.
3. **"Up" button:** This button can be used to increase various parameters.
4. **"Down" button:** This button can be used to reduce various parameters.
5. **Mode button:** For changing various parameters and switching modes.
6. **Beat button:** To change the time signature.
7. **On/Off button:** Press and hold to switch the device on or off.
8. **Rhythm button:** To change the beats/beat times within a bar.
9. **Loudspeaker:** For audible amplification of the sound.
10. **3.5mm headphone output:** For amplifying the sound via headphones/speakers.
11. **LCD display:** For displaying/visualizing various information.

## Metronome mode

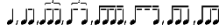
When the device is switched on for the first time, it is in metronome mode by default (see picture below). If this is not the case, press the mode button (Mode) a little longer to select between the individual modes and switch to the desired metronome mode.

Briefly press the on/off button to start or pause the metronome.

By briefly pressing the "Up" or "Down" button, you can set the tempo of the metronome (40-208 BPM/beats per minute). The tempo can be changed more quickly by holding down one of these buttons.

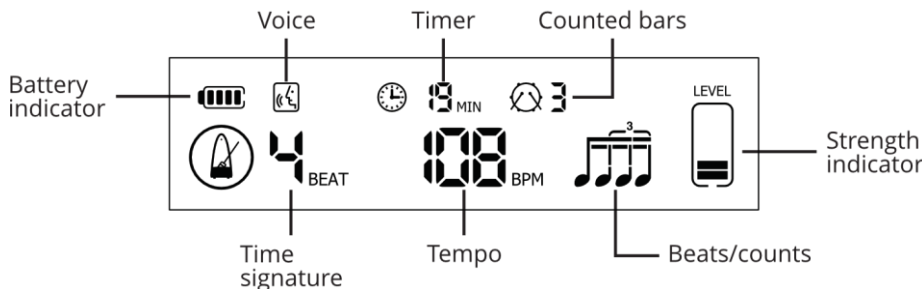
You can select the time signature (0,1,2,3,4,5,6,7,8,9) by briefly pressing the beat button.

You can change the beats/beat times within a bar by briefly pressing the rhythm button



The time to be practiced can be changed by briefly pressing the mode button (10, 20, 30, 40, 50, 60 minutes or infinite). ⌚ indicates that no time has been set.

By pressing and holding the rhythm button, you can activate a voice that counts the beats of the metronome. The first long press sets the voice to Chinese, the second long press sets it to English and the third long press deactivates the voice again.



## Counting mode

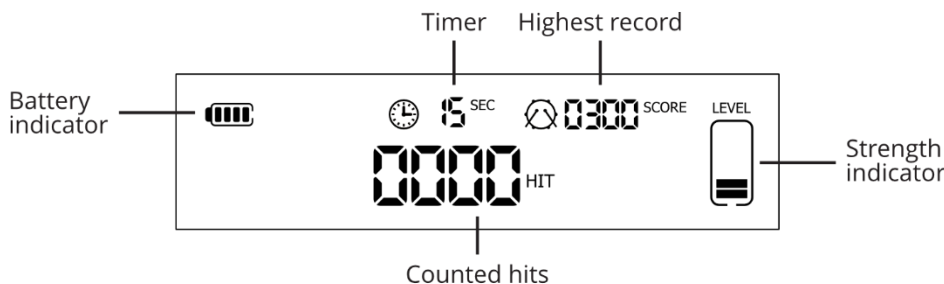
In this mode, the strokes are counted within the set time and the highest record will be saved (see table on next page).

Press the mode button (Mode) a little longer to select between the individual modes and switch to the desired counting mode (see picture below).

By then briefly pressing the mode button (Mode), you can set the time to be practiced (15, 30, 45, 60, 75, 90 seconds or infinite). ⌚ indicates that no time has been set.

You can reset the beats and the time by briefly pressing the On/Off button.

To restore the factory settings/records, press the Beat button a little longer until "CLr" appears on the display and then wait until the reset is completed.



Time	Highest record
15 seconds	100 strokes
30 seconds	200 strokes
45 seconds	300 strokes
60 seconds	400 strokes
75 seconds	500 strokes
90 seconds	600 strokes
Infinite	/

## Tempo mode

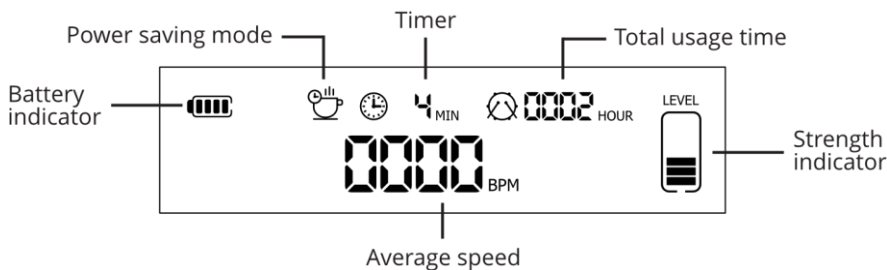
In this mode, the average speed and total usage time are displayed.

Press the mode button (Mode) a little longer to select between the individual modes and switch to the desired tempo mode (see picture below).

You can change the counting time (1, 5, 10, 15, 20, 15, 30 minutes or infinite) by briefly pressing the mode button (Mode). ☹️ indicates that no time has been set.

The counting starts from your first stroke.

You can reset the counting time and the speed reached by pressing the On/Off button.



## Strength indicator of pad strokes

The current value of your stroke is displayed depending on your position and stroke strength, which in turn is helpful for practicing your stroke strength.

LEVEL



## Connection of external devices

Headphones or an external speaker can be connected to the 3.5 mm headphone output via a jack cable to amplify the sound or for silent practicing. The internal speaker is automatically muted as soon as headphones/external speakers are connected.

## Practice time

The internal recording time of the drum trainer is limited to a maximum of 10,000 hours and is automatically reset by the device each time this time expires. The total recording time includes the time in which you use the metronome mode, the counting mode and the tempo mode.


The total usage time cannot be deleted or changed manually.

## Power saving mode

If the appliance is not operated for one minute, it automatically switches to power-saving mode and switches off automatically after 5 minutes. Power-saving mode is indicated by the following symbol on the display: ☹️

The selected mode and your settings are automatically saved before switching off.

## Specifications

Tempo range:	40-208 BPM
Time signature:	0, 1, 2, 3, 4, 5, 6, 7, 8, 9
Counting times:	
Power supply:	Built-in 1300 mA lithium battery
Speaker power:	0,5 W
charging current:	800 mA (max.)
Charging time:	2 hours
Battery life:	16 hours
Dimensions:	240 x 270 x 27 mm
Weight:	731 Gram
Accessories:	Instructions, USB type C cable

## WEEE declaration

(Waste of Electrical and Electronic Equipment)

Your product has been developed and manufactured using high-quality materials and components that are recyclable and reusable. The symbol means that your product must be disposed of separately from household waste at the end of its service life. Dispose of this appliance at your local collection point or recycling center. Please help to protect the environment in which we all live.

All technical data and appearances are subject to change without prior notice. All information was correct at the time of printing. Musikhaus Kirstein GmbH accepts no liability for the accuracy or completeness of the descriptions, photos or statements contained in this manual. Printed colors and specifications may differ slightly from the product. Musikhaus Kirstein GmbH products are only sold through authorized dealers. Distributors and dealers are not representatives of Musikhaus Kirstein GmbH and are not authorized to legally bind Musikhaus Kirstein GmbH in any way.

 **KIRSTEIN.de**

Musikhaus Kirstein GmbH  
 Bernbeurener Str. 11  
 86956 Schongau - Germany  
 info@kirstein.de  
 Telefon/Phone: 0049-8861-909494-0  
 Fax/Fax: 0049-8861-909494-19

