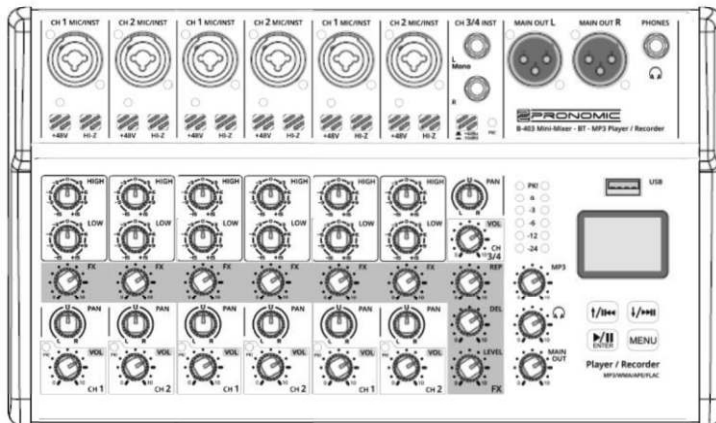
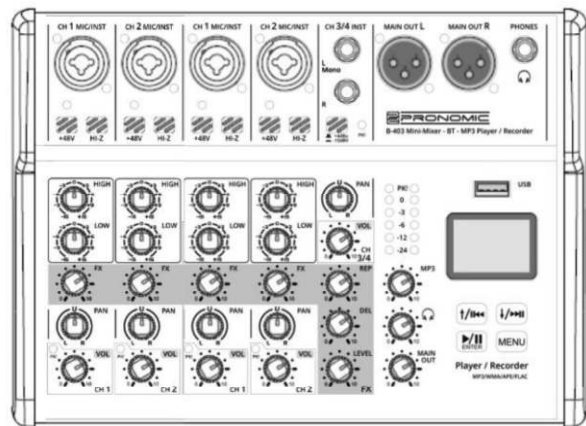
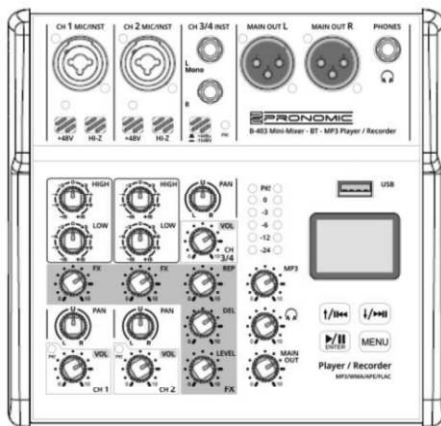


B-403 / B-603 / B-803



User Manual

Thank you for choosing this product. To ensure that you are completely satisfied with this product, please read and understand this manual carefully.



PLEASE READ CAREFULLY

Please keep this manual in a safe place for future reference. Hand over all documents when passing on the product to third parties. Never leave children unattended with the packaging material. For products packed in plastic bags, there is a risk of suffocation from packaging materials. The product should only be used under adult supervision. Only use the product if it is in perfect condition. Do not use the product if damage is visible or suspected. We are not liable for any damage that occurs as a result of non-observance of the safety instructions or incorrect or improper handling.



Follow the operating instructions!



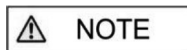
WARNING

The **WARNING** signal word identifies hazards that, without precautions, could result in serious injury.



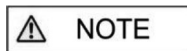
NOTE

The signal word **NOTE** indicates general precautions that should be observed when handling the product



NOTE

Images and screen images in this manual may differ slightly from the actual product's appearance, as long as it does not adversely affect the technical characteristics and safety of the product.



NOTE

All personal phrasing in this manual should be considered gender neutral.

This operating manual applies to responsible users and to persons who have been supervised or instructed in the operation of the device by a person responsible for their safety and who have proven that they are capable of handling the device.



WARNING

**Children should be supervised to ensure that they do not use this device as a toy.
Never allow children to play unattended with the packaging material.**



WARNING

Risk of damage to property! We are not liable for accidents that occur as a result of non-observance of the safety instructions or incorrect handling.

All information in this operating manual has been checked to the best of our knowledge and belief. However, neither the author nor the publisher can be held liable for any damages related to the use of this manual.

Other product, brand and company names mentioned in this document may be the trademarks of their respective owners. The user of this document is responsible for compliance with all applicable copyright laws.

 **WARNING**

Caution

Please observe the following basic instructions in order not to endanger yourself or others and to avoid damage to external devices.

 **NOTE**

Warnings

Do not disassemble or modify the product. This could result in injury from electric shock. If you notice that the power cord shows obvious signs of wear, the appliance is malfunctioning, smells burnt or smokes, immediately unplug the appliance from the wall outlet and refer servicing, maintenance or repair to an authorised service centre or your dealer.

Before cleaning the product, you should turn it off and disconnect it from the power supply. Always place the product on a flat, stable surface to ensure a secure stand.

Do not use the product in a damp or wet environment.

Do not place containers filled with liquids, such as vases, glasses or bottles, on the product.

Do not place small objects on top of it that could slide in, such as hairpins, sewing needles or coins.

 **NOTE**

Precautions


To avoid damage to the product, do not place it in places with high temperatures or a lot of dust, do not place it directly next to an air conditioner and avoid direct sunlight.

Do not place the article near other electrical equipment to avoid interference.

Do not use force when handling the product or place heavy objects on it.

Disconnect the power supply if you are not going to use the device for a longer period of time. To disconnect the power, pull the plug, not the cable.

Please handle the power cable with care. It should not be near radiators, do not place heavy objects on it and lay it in such a way that no persons can step on it or fall over it.

 **WARNING**

Mains voltage

If an external power supply unit is required for use, connect it to an outlet with the correct voltage.

Do not connect the device to a different mains voltage than that for which your product is intended.

Unplug the power cord from the wall outlet when not using the product or when there is a thunderstorm.

 **NOTE**

Place

Do not expose the product to the following conditions to avoid deformation, discoloration or major damage:

Direct sunlight, extreme temperature or humidity, excessively dusty or dirty place, strong vibrations or shocks, strong magnetic fields

 **NOTE**

Cleaning

Clean the product only with a soft, dry cloth. Do not use paint thinner, solvents, cleaning fluids or chemically impregnated wipes.

 **NOTE**

Handling

Do not exert excessive force on operating elements such as switches, knobs, buttons, and fastening screws.

Do not insert any paper, metal or other objects inside. If this happens, unplug the AC adapter/power cord from the wall outlet. Have the product checked by qualified service personnel.

© 2024

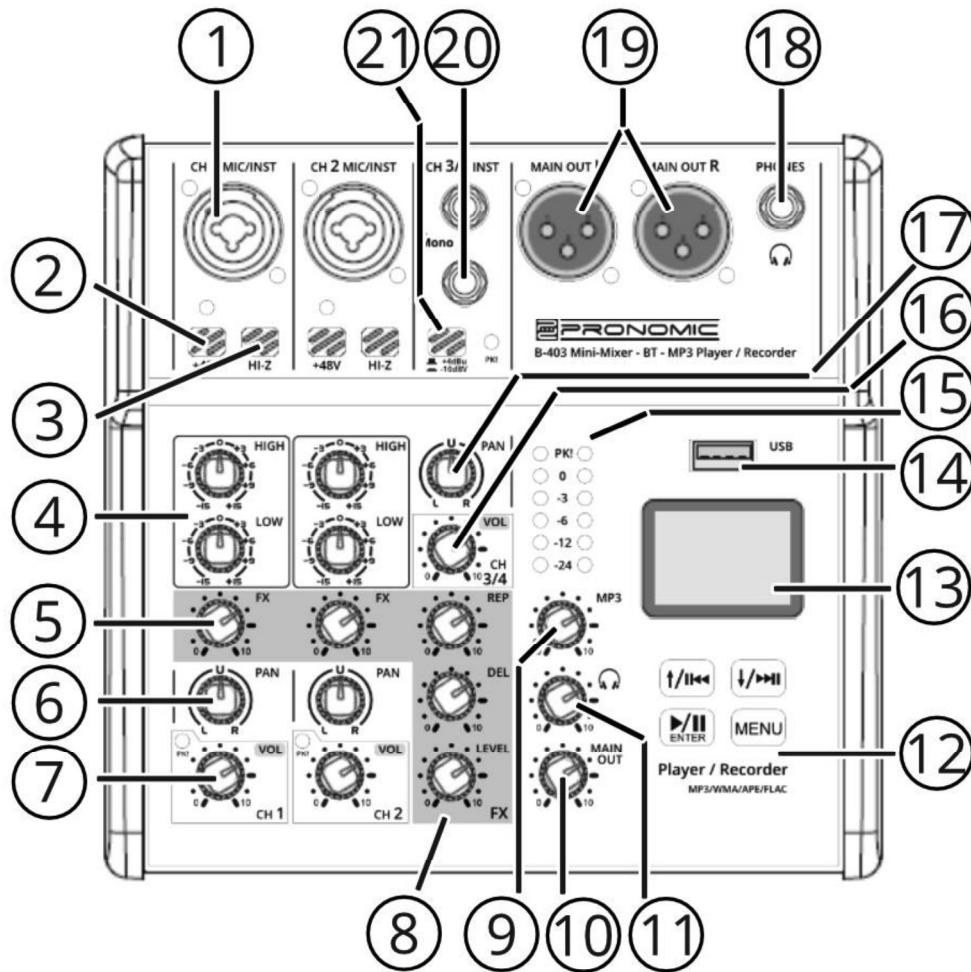
This manual is protected by copyright. Copying or reprinting, even in excerpts, is only permitted with the consent of Musikhaus Kirstein GmbH. The same applies to the reproduction or copying of images, even in modified form.

Content

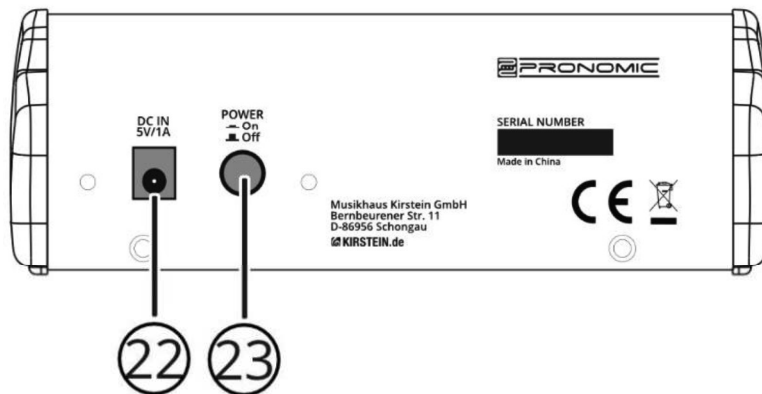
| | |
|---|-----------|
| 1. Connections and controls | 6 |
| Front panel connectors and controls | 6 |
| Rear connections and controls | 6 |
| 2. BT/MP3 player / recorder | 10 |
| Controls..... | 10 |
| System settings..... | 11 |
| Bluetooth..... | 11 |
| Player Mode USB..... | 11 |
| Recording mode-USB | 11 |
| Help for formatting the USB-stick | 11 |
| Connection to the computer via USB cable | 12 |
| Appendix: Technical data model B-403 / B-603 / B-803 | 12 |

1. Connections and controls

Front panel connectors and controls



Rear connections and controls



1 Connection socket microphone line guitar

This connector is designed as a combination jack. Both XLR microphone cables and 6.3mm jack cables/instrument cables can be connected to this jack

2 Switches phantom power

All mono channels have phantom power that can be activated separately. Press this button to activate +48V phantom power on the XLR input of the combo jack and press the button again to deactivate phantom power.

It is advisable to activate phantom power only when the signal source (e.g. condenser microphone) requires it. Phantom power should be deactivated for plugging and unplugging the cable. To avoid noise caused by the switching pulse, it is advisable to turn the volume control of the respective channel to minimum before switching phantom power on and off.

3 Switch Hi-Z

Press this button to adjust the input impedance of the channel to a low level instrument signal (e.g. electric guitar with passive pickups). Pressing the Hi-Z button increases the input impedance. Pressing the Hi-Z button again adjusts the input impedance of the channel back to line level (e.g. keyboard).

4 Knobs 2-band EQ

The two EQ controls can be used to adjust the treble and bass of the input signal. Turn the knob from the 12 o'clock position to the left to lower the value and to the right to increase the value.

5 FX Send knobs

Turn the knob clockwise to increase the signal value sent to the effect path. The FX send signal is tapped after the volume control of the respective channel.

6 Pan control

Turn the Pan control from the 12 o'clock position to the left to place the signal further to the left in the stereo image of the output signal. Turn the knob from the 12 o'clock position further to the right to place the signal further to the right in the stereo image of the output signal.

7 Volume control mono channel

Turn the Volume knob clockwise to increase the level of the respective channel. If the PK LED of the channel lights up, the level is too high. Turn the knob counterclockwise to decrease the level. Please note that the PK LED of a channel should not light up during operation to avoid noise and damage.

8 Knobs effect processor

The three controls of the effect processor influence the strength and the sound of the built-in digital effect. The REP control adjusts the number of echo repeats, the DEL control adjusts the speed of the echo repeats, and the LEVEL control adjusts the signal strength of the echo effect added to the output signal.

9 MP3 controller

Turn the MP3 knob clockwise to increase the output signal of the integrated MP3 player

10 MAIN-Out control

Turn the MAIN-Out knob clockwise to increase the stereo output signal of the mixer

11 Headphone out control

Turn the Headphone Out knob clockwise to increase the stereo output signal of the headphone output. Please note that too high a volume on the headphones could damage your hearing. Turn the knob fully counterclockwise before plugging in the headphones and gently increase the volume to a comfortable level.

12 Control panel MP3 player/recorder

See 2. BT/MP3 Player / Recorder

13 Display of the integrated MP3 player/recorder

See 2. BT/MP3 Player / Recorder

14 USB input socket of the integrated MP3 player/recorder

See 2. BT/MP3 Player / Recorder

15 LEVEL Meter

The 12 LEDs of the Stereo Level Meter indicate the signal strength of the stereo output signal. In normal operation, the display should be as close as possible to the 0 value at maximum deflection. Avoid values above 0 (PK!) to prevent noise and damage.

16 Volume control of the stereo channel

Turn this knob clockwise to increase the volume of the stereo input signal. If the PK LED of the channel lights up, the level is too high. Turn the knob counterclockwise to decrease the level. Please note that the PK LED of a channel should not light up during operation to avoid noise and damage.

17 Pan control of the stereo channel

Turn this knob clockwise from the 12 o'clock position to increase the signal of the stereo channel input labeled L/Mono. Turn the knob clockwise to increase the signal of the input marked R of the stereo channel. In the center position, both input channels are equal. Use this control position if a stereo signal (e.g. CD player) is present at this channel.

18 Headphone output

Connect your headphones to this 6.3mm output jack.

19 XLR MAIN-Out jacks

Use these balanced XLR output jacks to tap the stereo output signal. From here you can route the signal e.g. to an amplifier system or to active loudspeakers.

20 Stereo channel connection sockets (2x jack 6.3mm)

6.3mm jack cables can be connected to these input jacks

21 Stereo channel input sensitivity selector switch

With this push button the input sensitivity of the stereo channel can be raised by 4dBu or lowered by -10dBV. Select the position 4dBu for a standard line signal (e.g. master mixer/keyboard) and -10dBV when connecting devices with HiFi level (e.g. CD player/cassette deck).

22 Power supply socket

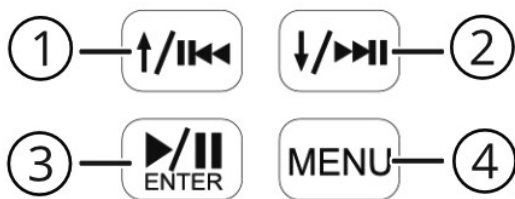
Connect the supplied power supply unit here for power supply.

23 Power switch

Press the power switch to start up the mixer. Press the power switch again to switch off the mixer. To avoid noise caused by the switching pulse, it is recommended to turn the volume control of the amplifier unit to minimum before switching the mixer on and off.

2. BT/MP3 player / recorder

Controls



1 UP-Back button

Press this button briefly to go to the previous title or to go back or up in the menu.

Press and hold this button to decrease the volume.

2 DOWN forward button

Press this button briefly to go to the next title or to move forward or down in the menu.

Press and hold this button to increase the volume.

3 PLAY-ENTER button

Press this button for play / pause or to confirm in the menu.

4 MENU button

Press the MENU button to enter the menu.

System settings

Note that you have not inserted a USB stick. Press the MENU key to enter the menu

Select the SYS menu item by pressing the DOWN forward key several times.

Confirm with the PLAY-ENTER button. Now you can set the illumination time of the display. You can also change the display contrast in this menu. The menu item Language provides the operating languages English or Chinese for selection. Under the Firmware item, you can display the firmware version.

Bluetooth

To establish a Bluetooth connection, press the MENU button (no USB stick inserted), select the BT menu item and confirm with the PLAY-ENTER button. The Bluetooth name is BT_SPEAKER.

Player Mode USB

Insert a USB stick with MP3, WMA, APE or FLAC data. The playback will start automatically.

Switch to the next title by pressing the DOWN forward button.

Switch to the previous title by pressing the UP-Back button.

Press the PLAY-ENTER button briefly to pause playback and again briefly to restart playback.

Briefly press the MENU button to select the playback modes, select an EQ setting for the MP3 player recorder, display the root menu of the USB stick or delete a file. The navigation is done with the UP-Back and DOWN-Forward buttons. Confirm with the PLAY-ENTER button.

Recording mode-USB

In playback mode, press and hold the MENU button to enter record mode. Press the PLAY-ENTER button briefly to start recording. You can pause the recording by briefly pressing the PLAY-ENTER button again.

To stop recording, press and hold the PLAY-ENTER button.

Recording format: MP3/48KHz sampling 128Kbs bit rate

Help for formatting the USB-stick

If your USB stick is not recognized or playback or recording is not possible, check that it is working properly and is the right size and format. We recommend a USB stick smaller than or equal to 32 GB and formatting in FAT32 (or ext3/ext4). USB sticks formatted in exFAT format are not supported.

Connection to the computer via USB cable

To establish a connection to the computer, connect the USB socket (14) with a USB A to A cable (not included in the scope of delivery) to your computer. In this case, the power supply can also be provided via this USB connection. If not automatically recognized, select the menu item "PC" and confirm with the PLAY-ENTER button if necessary. You can now play music from the computer via the USB connection through the mixer (the volume is controlled using the MP3 control (9)), or send the sum signal to the computer (the transmission volume depends on the MAIN-Out control (10)).

Appendix: Technical data model B-403 / B-603 / B-803

| | |
|-----------------------------------|---|
| Inputs | Mono (Mic/Line): 2 / 4 / 6 Stereo: 1 |
| Outputs | MAIN L/R: 1 Phones: 1 |
| Max. Output Level | 3Vrms |
| Distortion factor at 1KHz (THD+N) | <0,03% |
| Crosstalk attenuation | 92 dB |
| Dynamic range | 102 dB |
| Frequencies 2 Band EQ | Low 80Hz, High 12KHz, \pm 15dB |
| Phantom power | Yes, +48V |
| Power supply | DC 5V, 1A |
| Power consumption | Max. 5W |
| Dimensions [mm] | 166 / 220 / 274 x 66 x 165 |
| Weight [kg] | 0,89 / 1,17 / 1,45 |

WEEE Declaration

(Waste of Electrical and Electronic Equipment)

Your product has been designed and manufactured with high quality materials and components that are recyclable and can be reused.

This symbol means that electrical and electronic devices must be disposed of separately from household waste at the end of their useful life.

Please dispose of this device at your local municipal collection point or at the recycling center.

Please help preserve the environment we live in.



SIMPLIFIED EU DECLARATION OF CONFORMITY

Musikhaus Kirstein GmbH hereby declares that the radio equipment type [Pronomic B-403, B-603, B-803] is in compliance with Directive 2014/53/EU. The full text of the EU Declaration of Conformity is available at the following internet address:

http://www.kirstein.de/docs/Konformitaetserklaerung/CE_Konformitaetserklaerung_0007386_1.pdf

Technical changes and changes in appearance are reserved.

All information corresponds to the status at the time of printing.

Musikhaus Kirstein GmbH assumes no liability for the correctness and completeness of the descriptions, illustrations and information contained therein.

Shown colors and specifications may differ slightly from the product.

Musikhaus Kirstein GmbH - Products are only available through authorized dealers.

Distributors and dealers are not authorized representatives of Musikhaus Kirstein GmbH and have no authorization to bind Musikhaus Kirstein GmbH legally in any way, be it expressly or through coherent action.

 **KIRSTEIN.de**

Musikhaus Kirstein GmbH
Bernbeurener Str. 11
86956 Schongau - Germany
Phone: 0049-8861-909494-0
Fax: 0049-8861-909494-19

